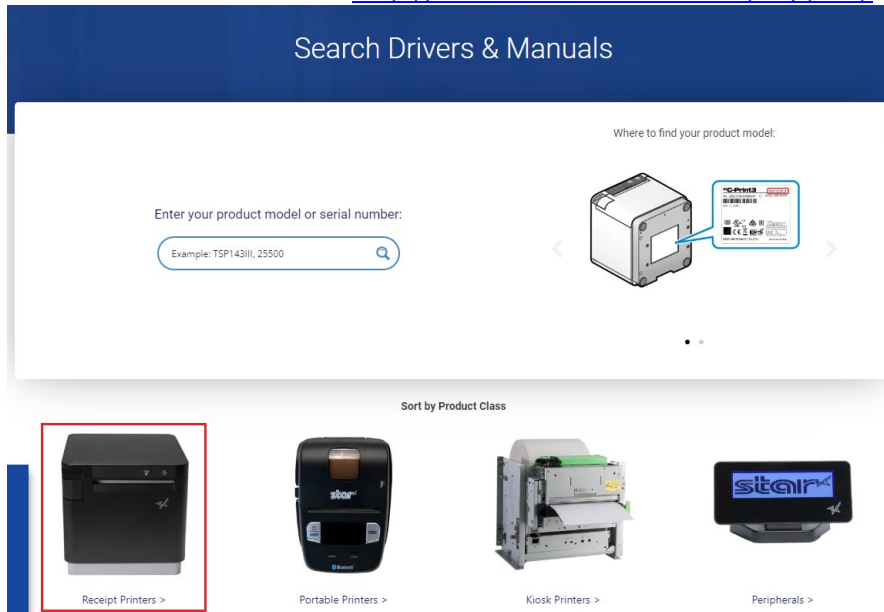


How to add printer BSC10E model on Windows

Please do not connect printer to PC during install driver utility

Please connect printer & Windows PC in same network

1. Download driver from > <http://www.starmicronics.com/support/> and click "Receipt Printer"



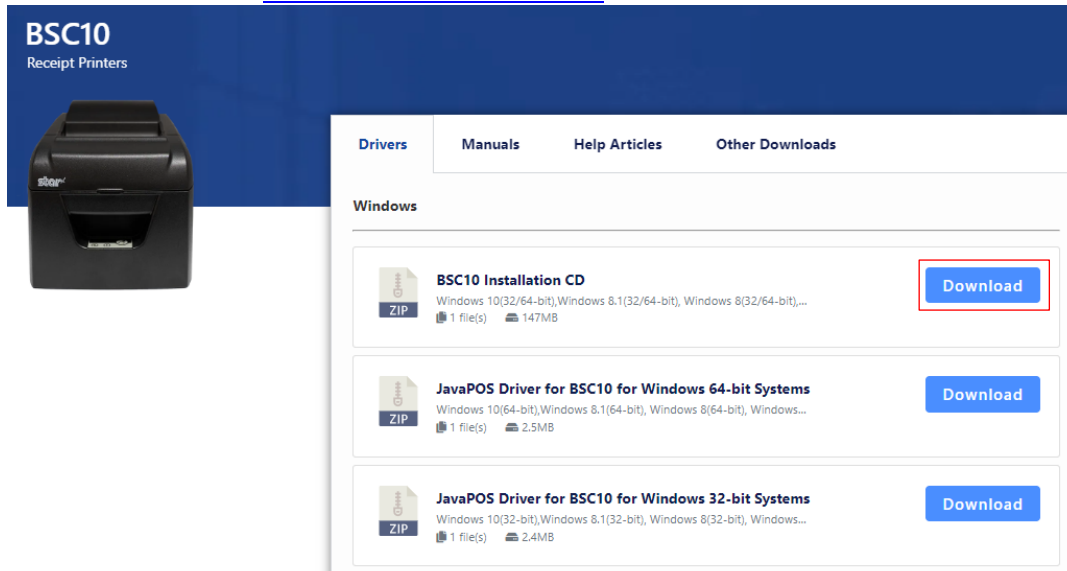
2. Scroll Down and select "BSC10"



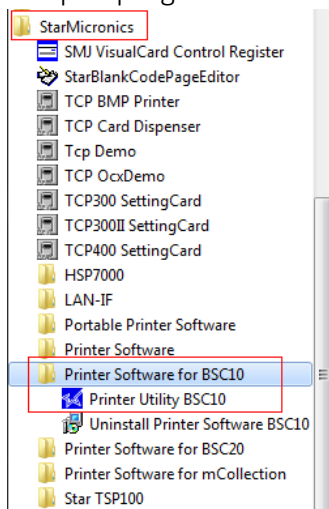
BSC10

[Learn More >](#)

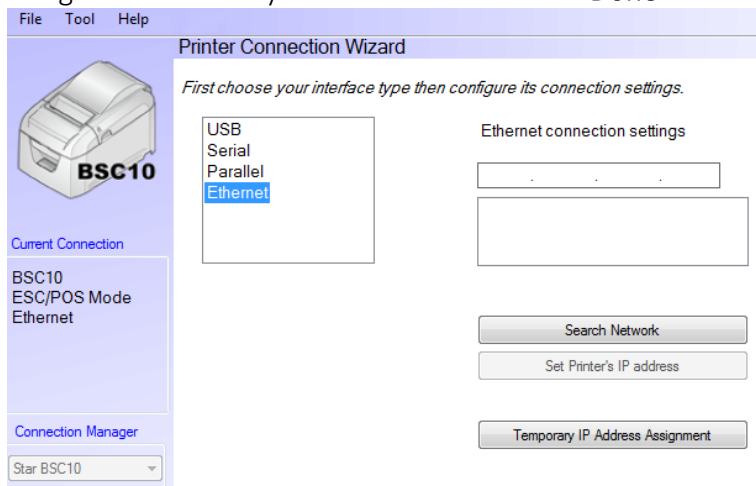
3. Click download > [BSC10 Installation CD V2.1*](#) and install after download finished.



4. Open program Printer Software for BSC10



5. Selected connection 'Ethernet' and fill the IP Address or click 'Search Network' if the program did not get IP Address by themselves. Then click 'Done'



6. Click 'Windows Printer Queue Management' for add printer to Devices & Printers (Control Panel)

Utility Functions

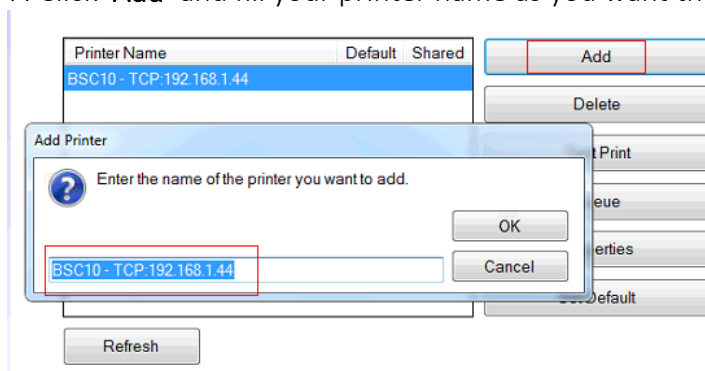
Windows Printer Queue Management

This function will allow for the installing and management of print queues for the windows printer spool system.

Printer Settings

Use this function to configure your printer's settings and fine tune

7. Click 'Add' and fill your printer name as you want then click 'OK'



8. Check your printer was show in devices & printer (Control Panel)

