

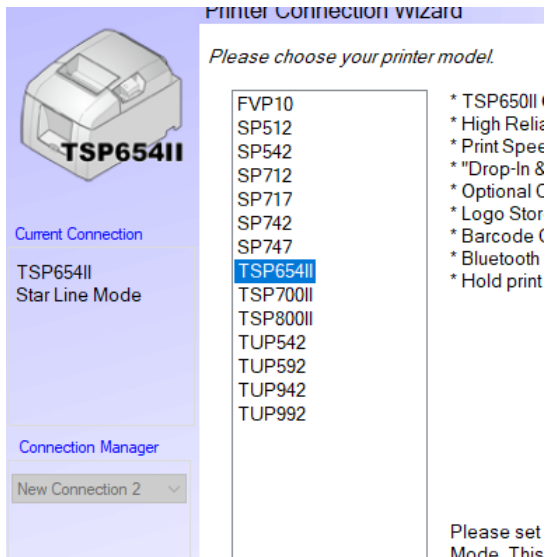
How to enable/disable taken sensor for printer TSP650IISK model

****Change by utility on Windows****

****Normally, default setting of the printer unit was already **ENABLE Taken Sensor******

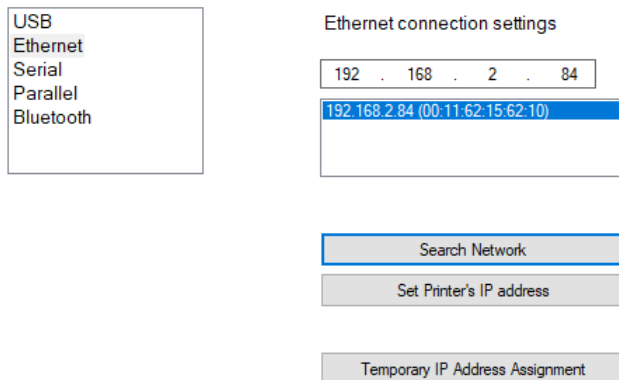
****This sample using LAN Connection****

1. Open 'Printer Utility Star PRNT'
2. Select model 'TSP654II' -> Click 'Next'

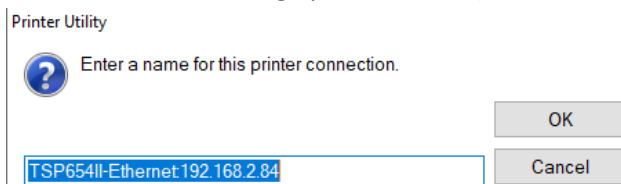


2. Select 'Ethernet' -> 'Search Network' and you will get IP Address of the printer automatically -> Click 'Done'

First choose your interface type then configure its connection settings.



3. Click 'OK' if don't change printer name (Not necessary to change)



4. Click 'OK'

Printer Utility



To use printer driver, make printer queue from [Windows Printer Queue Management] page and configure the printer driver settings.

For OPOS users, do not take this procedure.

To make use of [Star Micronics Cloud], printer queue or OPOS POS Printer device is required.

OK

5. Click 'Printer Setting'

[Windows Printer Queue Management](#)

This function will allow for the installing and management of printer queues for the windows printer spool system.

Star Micronics Cloud

Enable retailers to engage with customer more effectively.

[Printer Settings](#) ←

Use this function to configure your printer's settings and fine tune its operation.

[Troubleshooting](#)

Use this function to check and troubleshoot your printer by sending it a variety of diagnostic print patterns.

[OPOS](#)

This function allows you to register and configure OPOS POSPrinter and CashDrawer devices.

[Logo Store](#)

Use this to store your logos and images into the printer. This is often useful in terms of deployment and also in terms of print speed.

[Text Search](#)

Use this function to trigger logo printing and peripheral device driving based on the text of your receipts.

6. Look at 'Hold Print Function > Enable' mean printer will be holding the paper and cannot be printing next queue until remove the paper out (**Default Setting**)

[Hold Print Function](#) Enable *

[Hold Print Reminder](#) Disable *

[Hold Print Status](#) Enable *

[Hold Print Timeout](#) Disable *

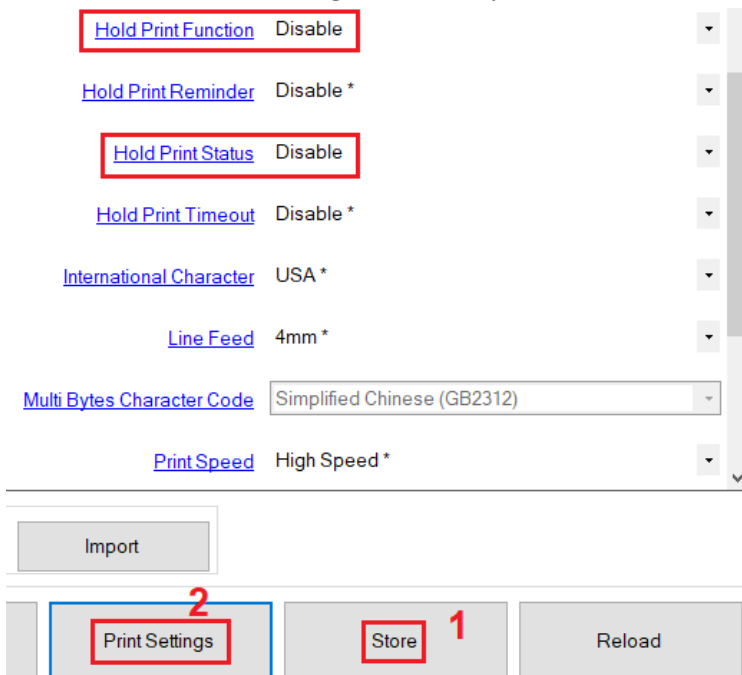


7. Or check by self-test at the below

```
-- Memory Switch --
FEDCBA9876543210 HEX.
<0> 0000000000000000 0000
<1> 0000000000000000 0000
<2> 0010000000000000 2000
<3> 0000000000000000 0000
<4> 0000000000000000 0000
<8> 0000000000000000 0000
<A> 0000000000000000 0000
<B> 0000000000000000 0000

-- Memory Switch Detail --
<0>4 = Character Mode: StandardJ3.0
<1>9 = Top Margin: Default
<1>4 = Zero Style: Normal Zero
<1>3-0= Inter. Char: USA
<2>F = Refresh Mode: Valid
<2>D = Speed Down@Barcode: Yes
<2>C = 180 Rotation: Invalid
<2>A,8= Print Start Control: Page
<2>7 = Print Pass: Special
<2>5,4= Print Speed: Normal
<3>F-8= Page: Normal
<3>4 = ANK Pitch: 12 dot
<3>1 = <CR>: Ignore
<3>0 = Feed Pitch: 4mm
<4>2-0= Printable Area: 72mm
<8>F-C= H-Reduced Size: 67%
<8>3 = H-Paper Reduction: Invalid
<8>2 = V-Paper Reduction: Invalid
<A>F-D= HoldPrintTimeout : Invalid
<A>C = HoldPrintReminder: Invalid
<A>1 = HoldPrintStatus : Valid
<A>0 = HoldPrint : Valid
```

8. In case do not want to hold paper, need to change 'Hold Printer Function > Disable' and 'Hold Printer Status > Disable' then printer can be printing without remove the paper and then Click 'Store' -> Click 'Print Setting' for check by self-test



The screenshot shows a printer settings menu with the following items:

- Hold Print Function: Disable (highlighted with a red box)
- Hold Print Reminder: Disable *
- Hold Print Status: Disable (highlighted with a red box)
- Hold Print Timeout: Disable *
- International Character: USA *
- Line Feed: 4mm *
- Multi Bytes Character Code: Simplified Chinese (GB2312)
- Print Speed: High Speed *

Below the settings menu are three buttons: "Import", "Print Settings" (highlighted with a red box and a red number '2'), "Store" (highlighted with a red box and a red number '1'), and "Reload".

```

-- Memory Switch --
FEDC8A9879543210 HEX.
<0> 0000000000000000 0000
<1> 0000000000000000 0000
<2> 0010000000000000 2000
<3> 0000000000000000 0000
<4> 0000000000000000 0000
<5> 0000000000000000 0000
<6> 0000000000000000 0003
<7> 0000000000000000 0000

-- Memory Switch Detail --
<0>4 = Character Mode: StandardJ3.0
<1>9 = Top Margin: Default
<1>4 = Zero Style: Normal Zero
<1>3-0= Inter. Char: USA
<2>F = Refresh Mode: Valid
<2>D = Speed Down@Barcode: Yes
<2>C = 180 Rotation: Invalid
<2>A,8= Print Start Control: Page
<2>7 = Print Pass: Special
<2>5,4= Print Speed: Normal
<3>F-8= Page: Normal
<3>4 = ANK Pitch: 12 dot
<3>1 = <CR>: Ignore
<3>0 = Feed Pitch: 4mm
<4>2-0= Printable Area: 72mm
<3>F-C= H-Reduced Size: 67%
<3>3 = H-Paper Reduction: Invalid
<3>2 = V-Paper Reduction: Invalid
<4>F-0= HoldPrintTimeout : Invalid
<4>C = HoldPrintReminder: Invalid
<4>1 = HoldPrintStatus : Invalid
<4>0 = HoldPrint : Invalid
    
```