

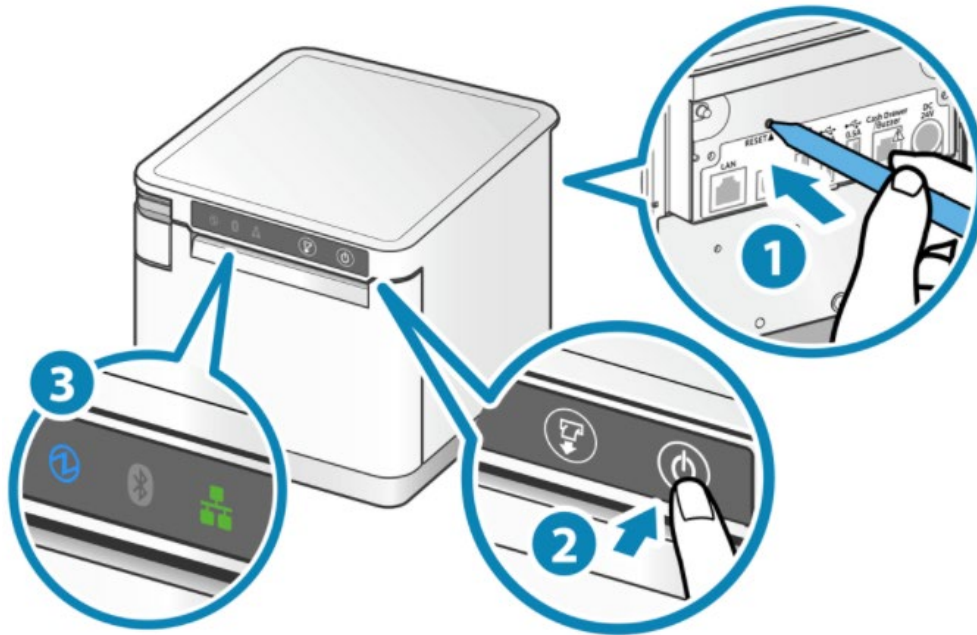
## How to reset Bluetooth connection for Printer mC-Print 3



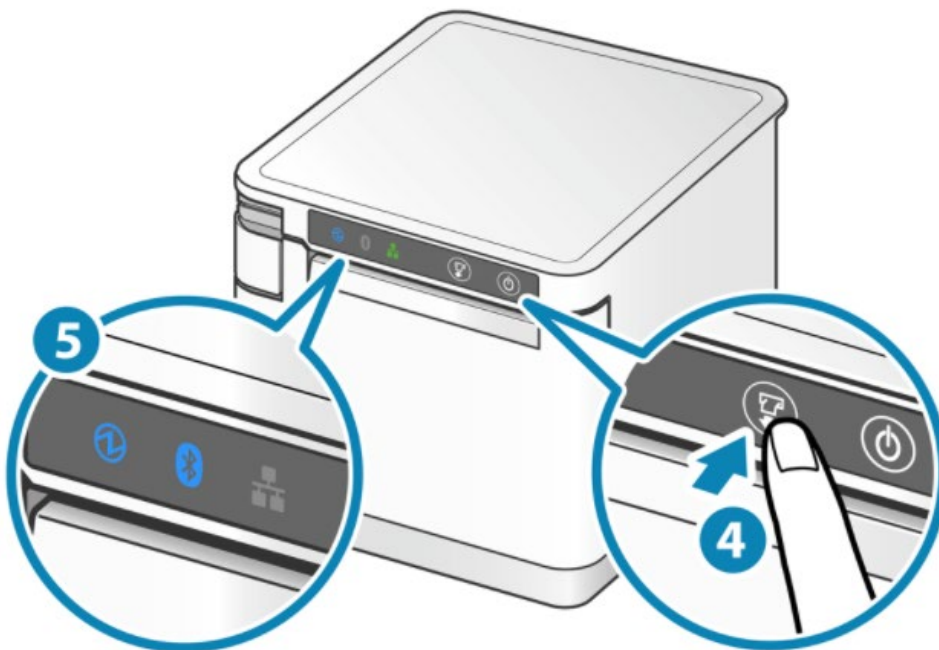
\*This manual for mC-Print 3 (Bluetooth Model)

\*\*Turn power printer off before follow this manual

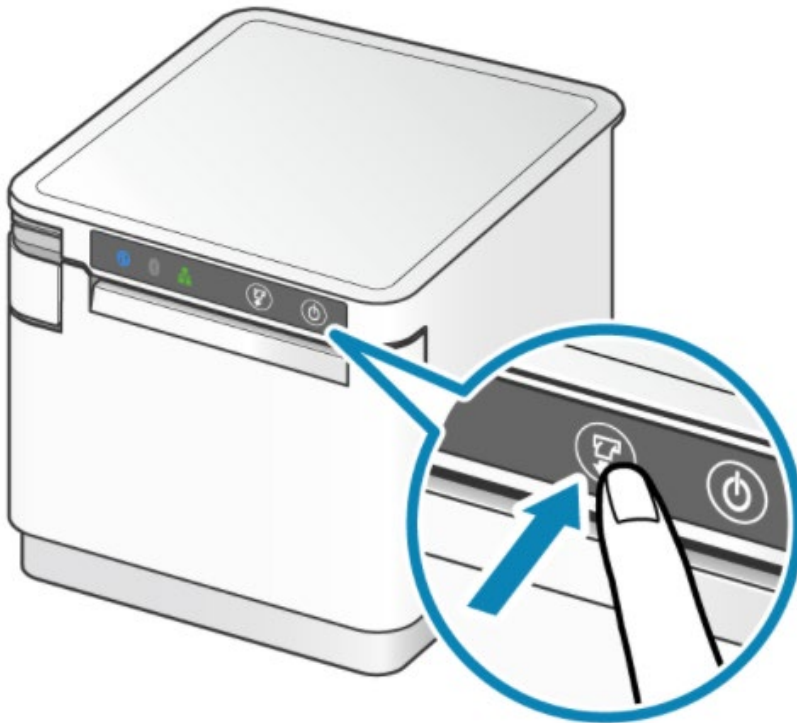
1. Find something which is small then press "RESET" button at behind the printer.
2. Continue hold "RESET" button and turn power printer ON in the same time.
3. LED Network Icon (Green Color) in front of the printer will be flashing.



4. Press FEED button to select Bluetooth Icon



5. Press and hold FEED button again until LED extinguish.



6. When completed the initialization, there is some sound from the printer.