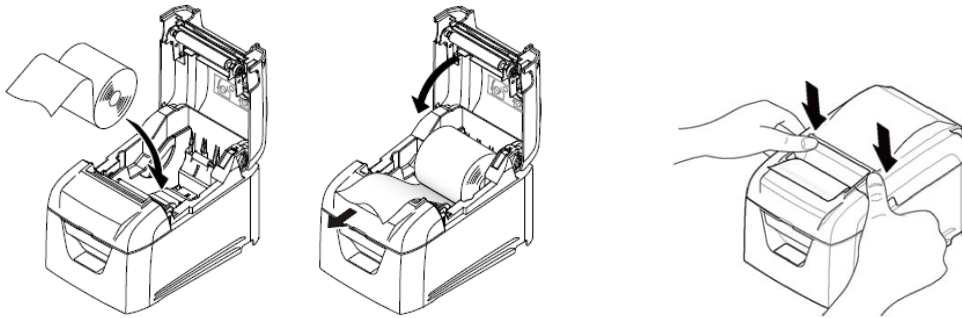




How to check maintenance counter of printer model BSC10 series

Check by hardware

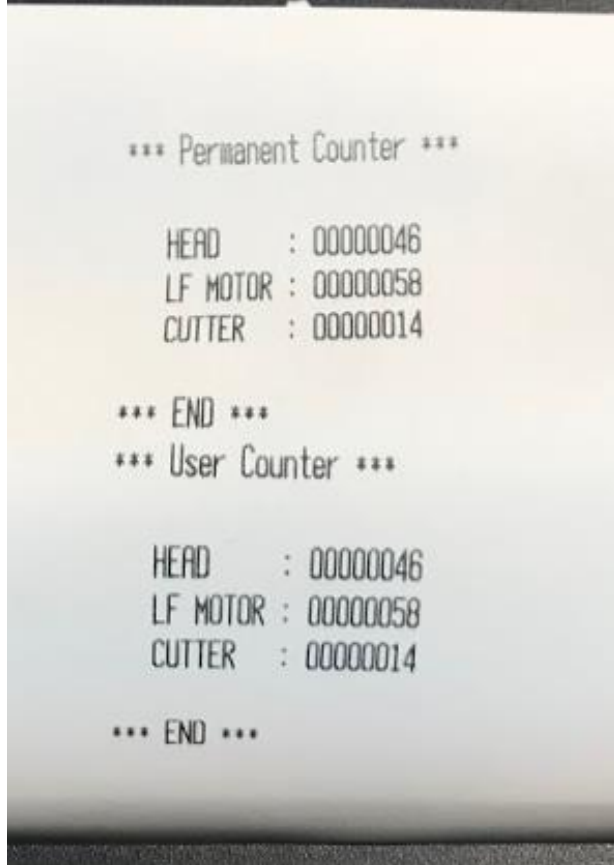
1. Input the roll paper then close the cover.



2. Press and hold the 'FEED' button then turn on the printer.

3. Printer is printing self-test then POWER LED and ERROR LED will be flashing, continue holding the 'FEED' button at least 5 seconds then release the 'FEED' button.

4. Press the 'FEED' button once again and printer will be printing 'Permanent Counter'.



How to calculate?

HEAD: 00000046 = Hex: 46 = Decimal: 70 = $70 \times 4,000 = 210,000$ dot lines

LF MOTOR: 00000058 = Hex: 58 = Decimal: 88 = $88 \times 4,000 = 352,000$ dot lines

CUTTER: 00000014 = Hex: 14 = Decimal: 20 = $20 \times 10 = 200$ cuts