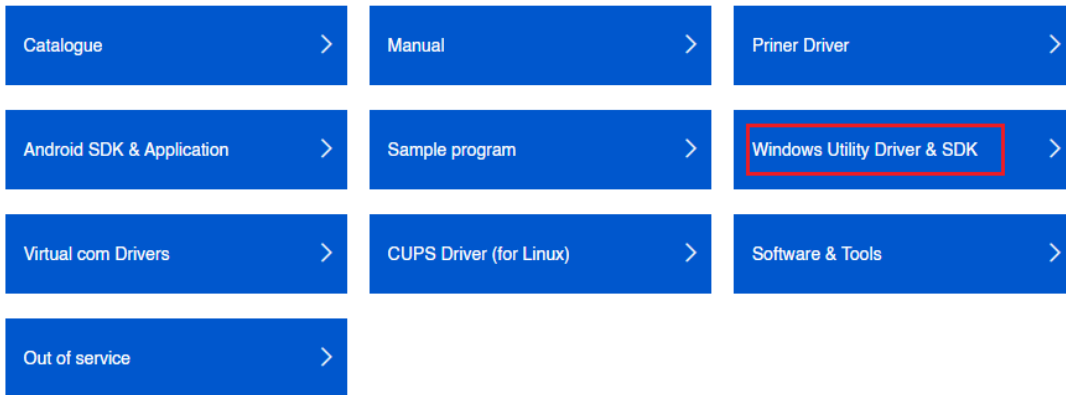




Printer Driver Sanei SK4 Installation

1. Download Driver Printer from <https://www.sanei-elec.co.jp/en/support/downloads/> then select 'Windows Utility Driver & SDK' as picture below.

Download



2. Click Download File: 'UtilityPrinterDriver_V20109(zip)'.

Windows Utility Driver & SDK

Utility driver (English Version)

Supported printers

SK1-21/31/41, SK1-21H/31H, SK1-211/311, SK4-21/31,
SD3-21/22, SM4-21/31

The instruction manual is included in the downloaded file. For the details of the installation procedure, please refer to the manual.

Download File : [UtilityPrinterDriver_V20109\(zip\)](#)

Ver: 2.01.09

Update history : [history-utility_Ver20109R00E\(PDF\)](#)

Windows SDK is also included in the downloaded file. The SDK files are found in the following location after the driver installation is completed.

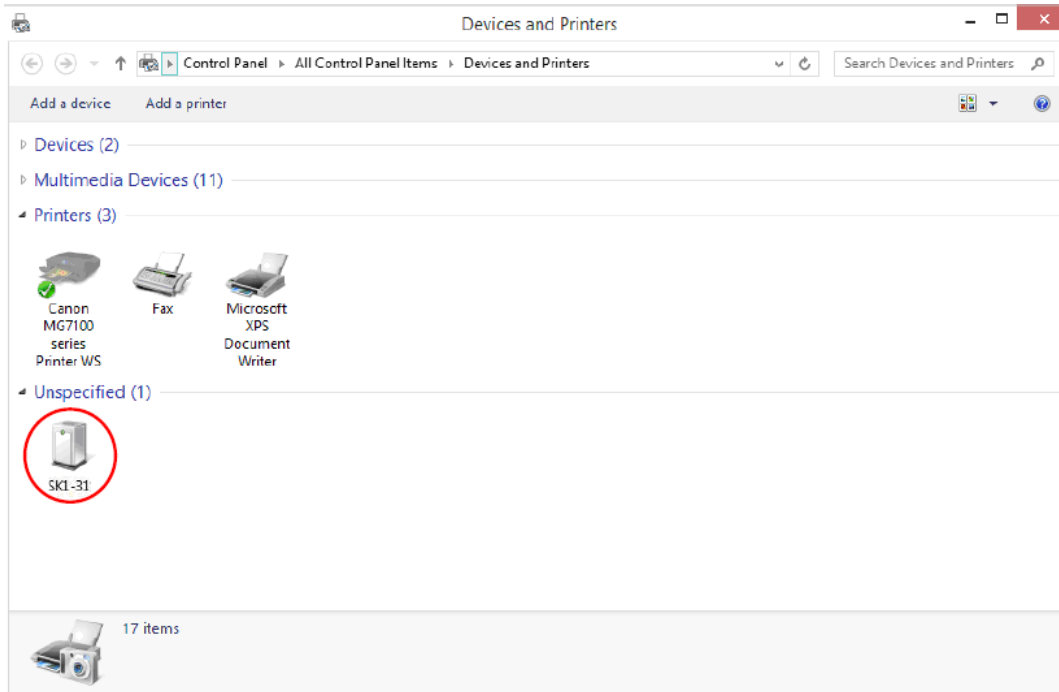
C:\Program Files (x86)\Sanei Elec Inc

File name : SDK.zip

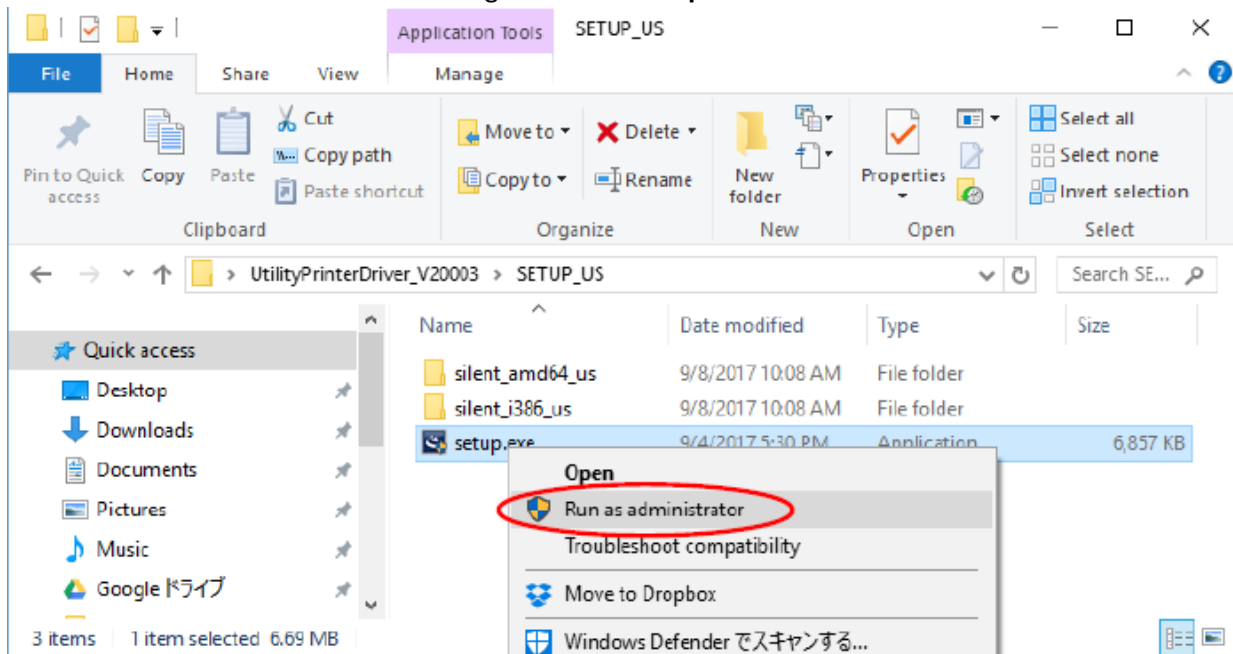


Printer Driver Sanei SK4 Installation

3. When finished turn on Printer SK4 then connect to Windows by USB cable then Windows will get **'Unspecified'** devices in **'Devices and printers'** page as picture below.



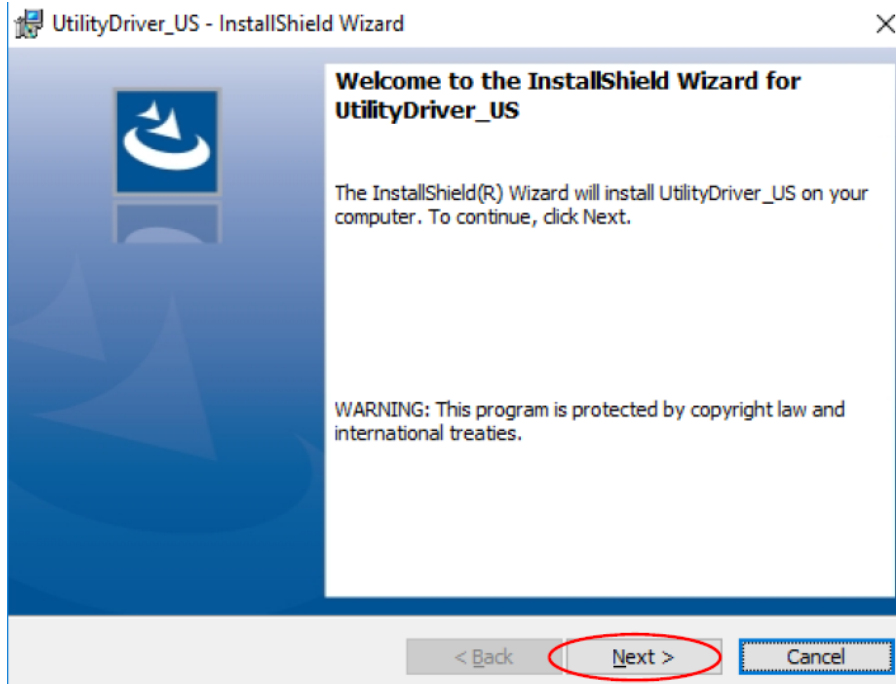
4. Go to driver destination folder then right click on **'Setup.exe'** the select **'Run Administrator'**.



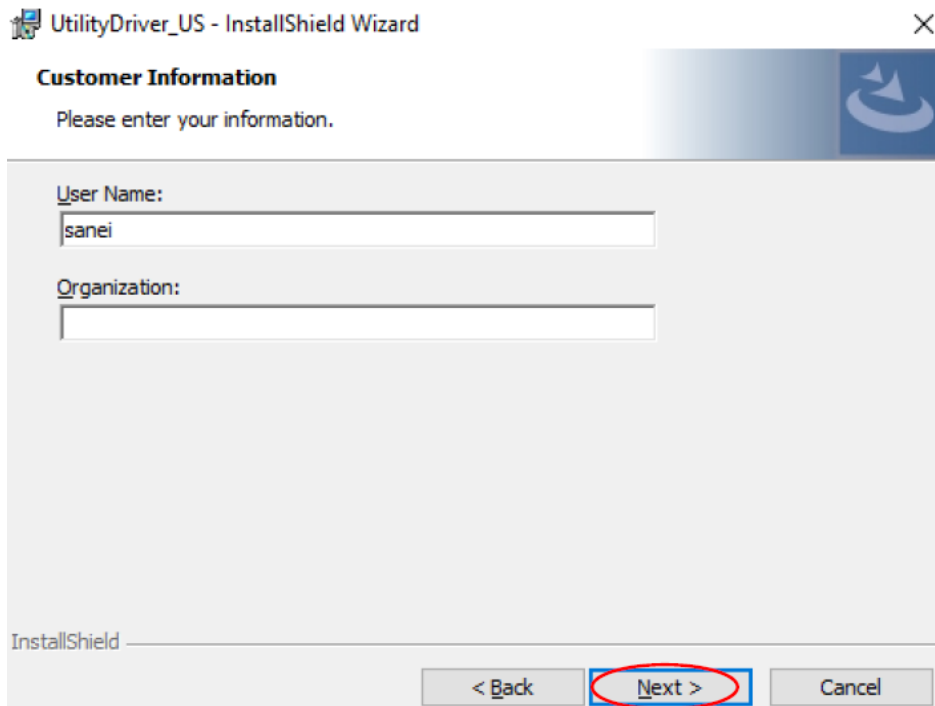


Printer Driver Sanei SK4 Installation

5. Click 'Next'.



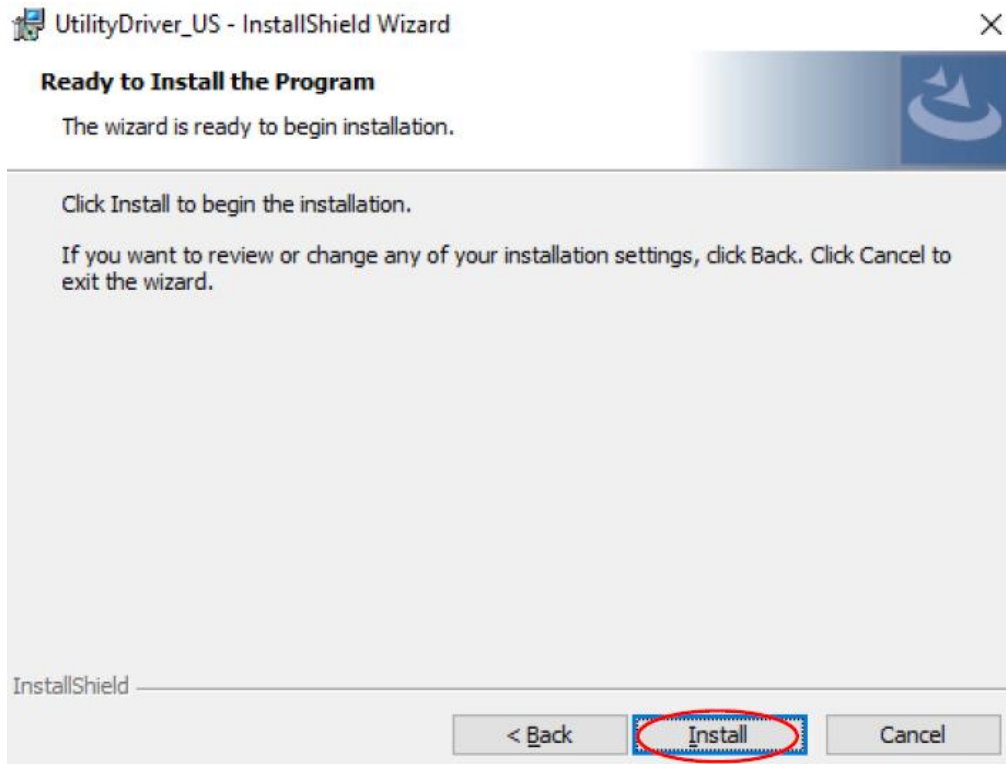
6. Click 'Next'.



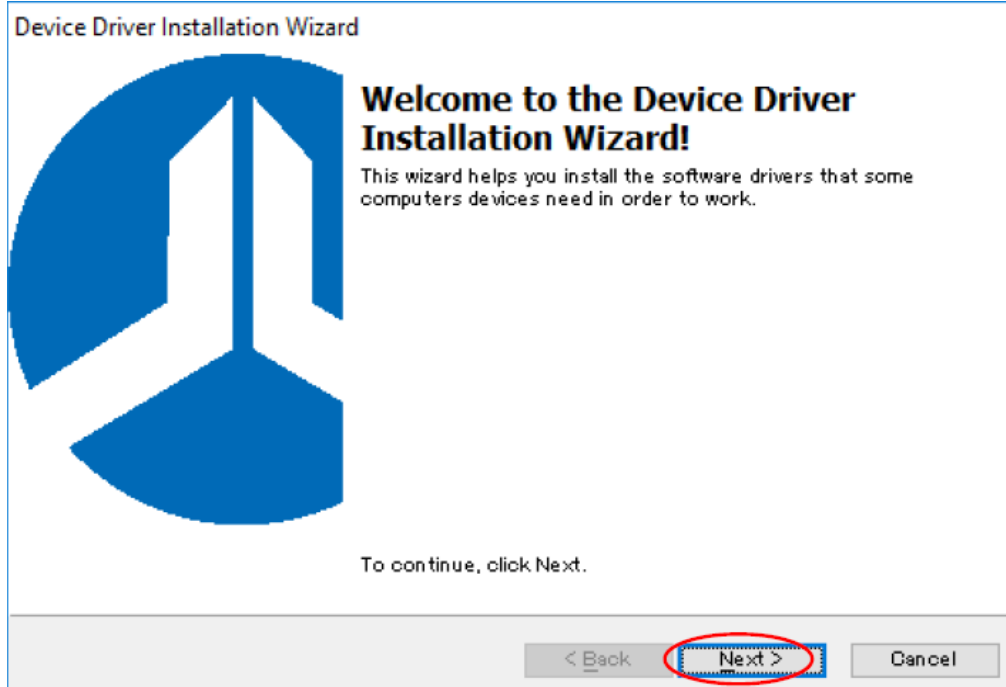


Printer Driver Sanei SK4 Installation

7. Click **'Install'**.



8. Wait until finished then click **'Next'**.



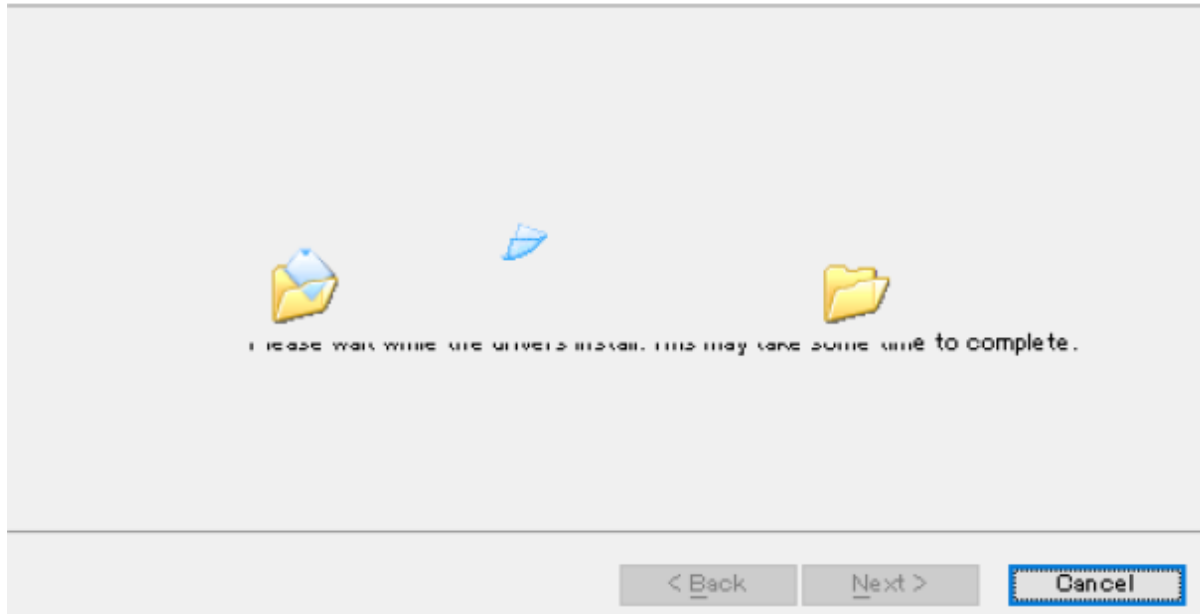


Printer Driver Sanei SK4 Installation

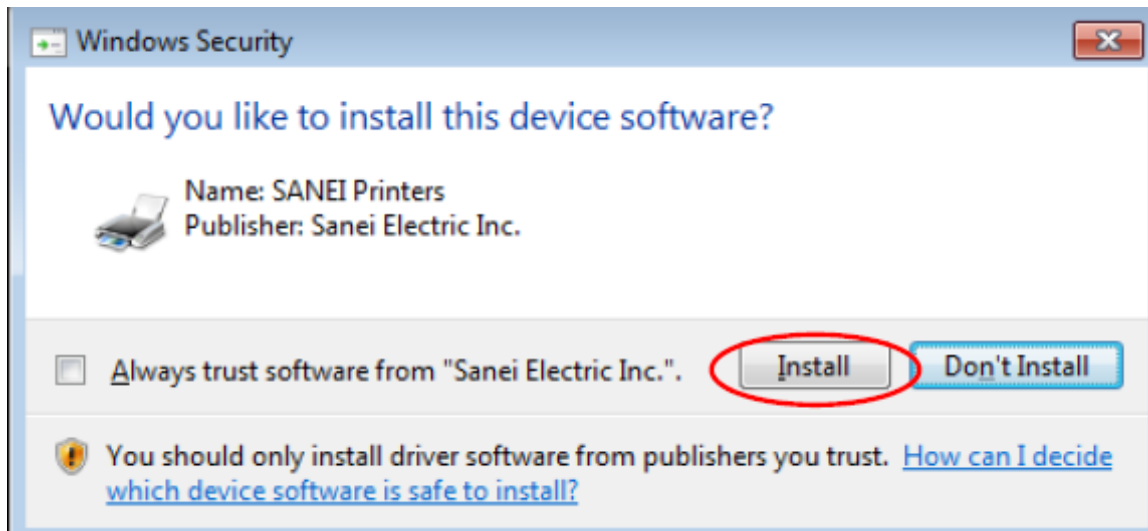
9. Please wait in this process.

Device Driver Installation Wizard

The drivers are now installing...



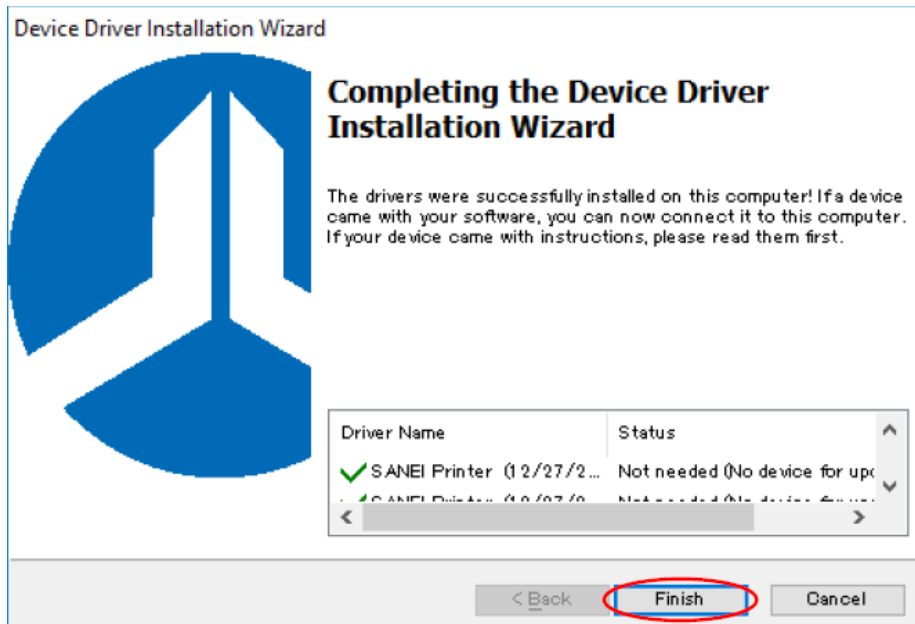
10. Click 'Install'.



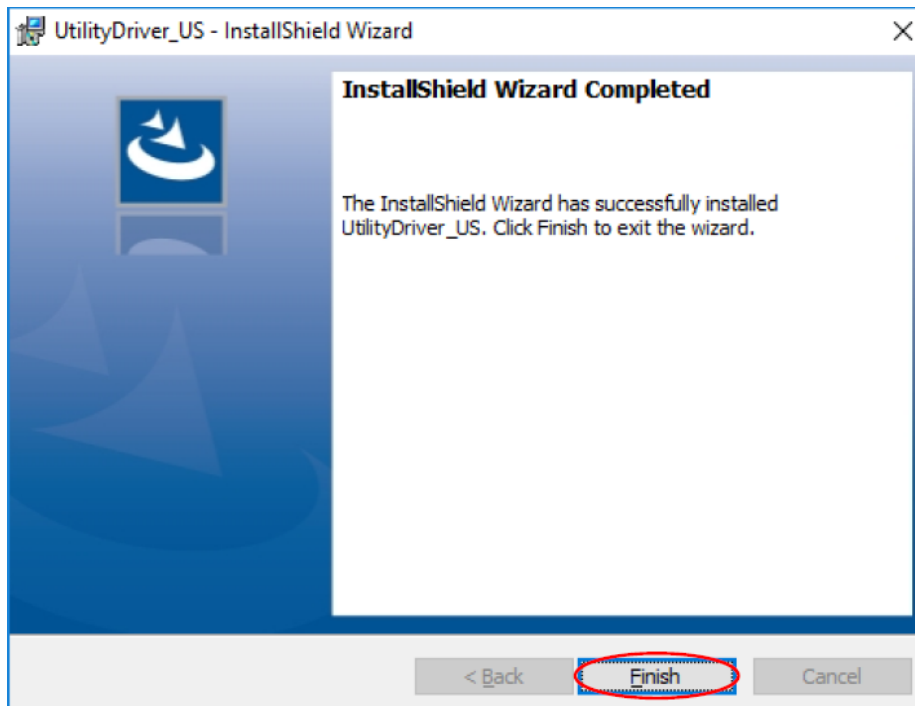


Printer Driver Sanei SK4 Installation

11. Click 'Finish'.



12. Click 'Finish'.





Printer Driver Sanei SK4 Installation

13. Then printers will appear on Printer tab instead as the picture below.

