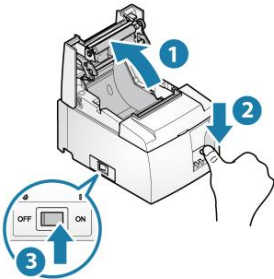
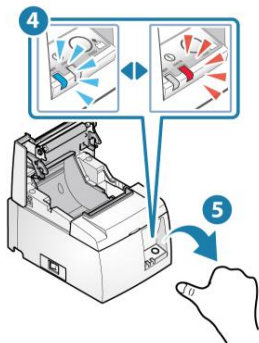


Initialize Network Settings: TSP100IIIILAN

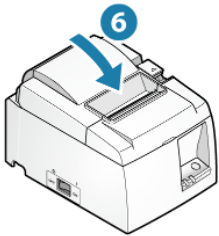
- Open the printer cover **1**, press and hold the Feed button **2**, and turn ON the power switch located on the side of the device **3**.



- When the LED (blue/red) flashes alternately **4**, release the Feed button **5**.



- Close the cover **6**.



When initialization is completed, the LED (blue/red) will slowly flash alternately **7**. Turn the power OFF **8**.

