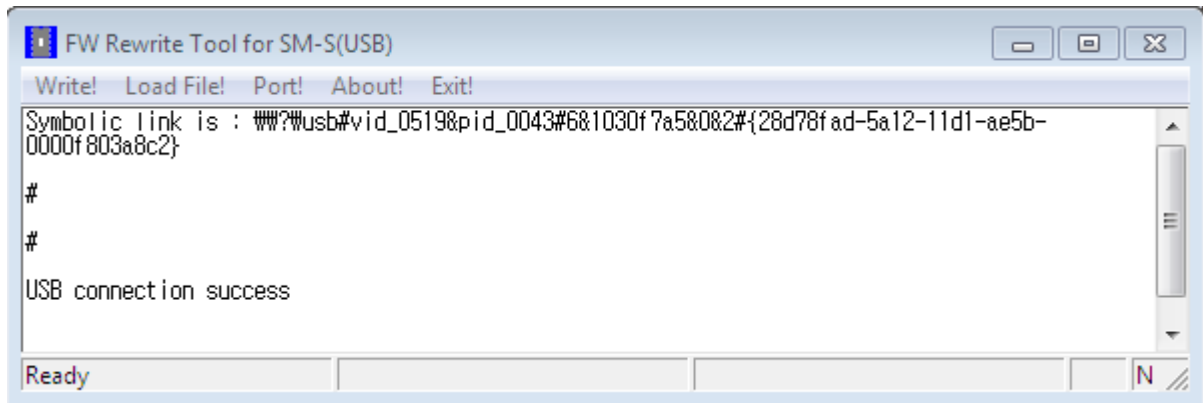


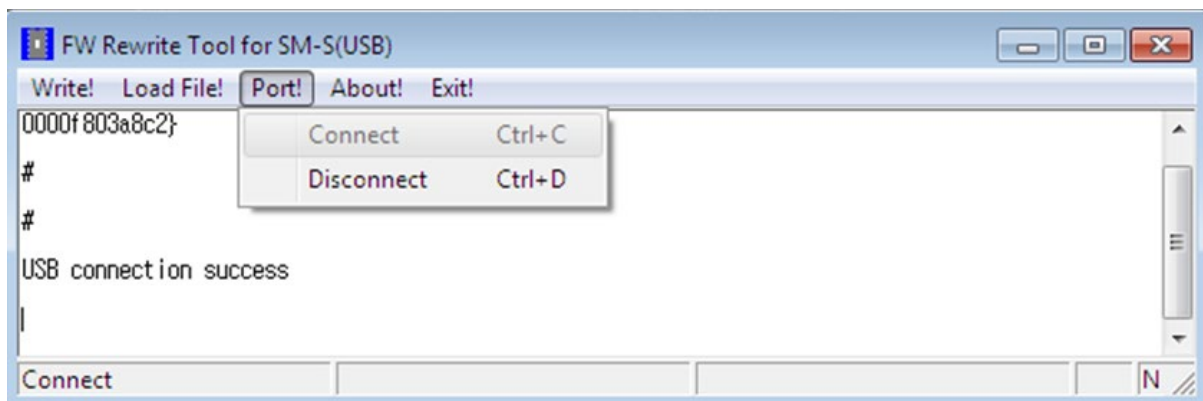
## How to update firmware SM-S230i

1) Connect the printer with PC via USB wire.

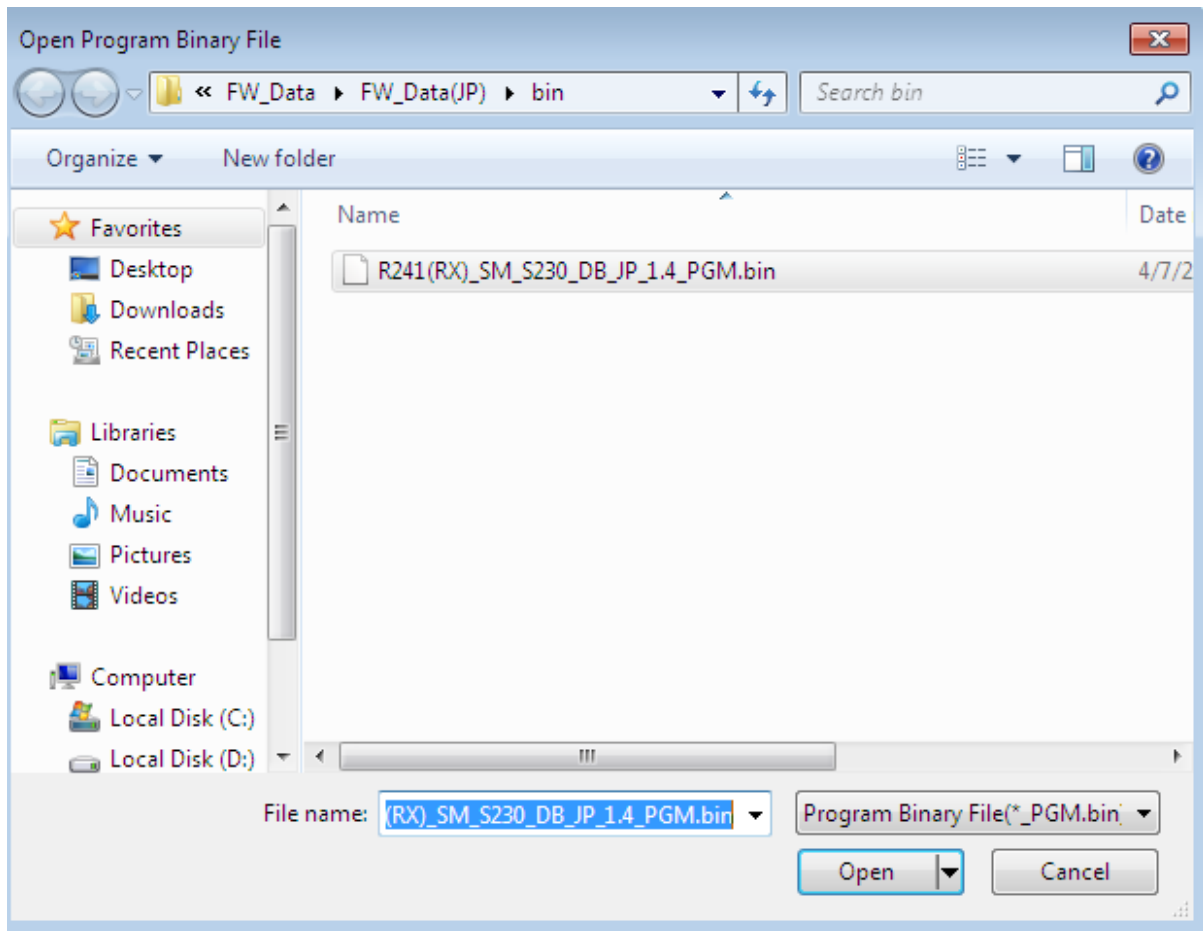
2) Open the file : FW\_RewriteTool\_for\_SM-S(USB).exe (located at SM-S230I\_Ver 1.4\FW\_Rewriting\_Tool ) >> it will show “USB connection success”



2.1 Manually connect by select “Port” >> select “connect”



3) Select “Load File!” >> select “Load File Program” >> chose file : “R241(RX)\_SM\_S230\_DB\_JP\_1.4\_PGM.bin” (Located at SM-S230I\_Ver 1.4\FW\_Data\FW\_Data(JP)\bin) >> click “Open”



```
FW Rewrite Tool for SM-S(USB)
Write! Load File! Port! About! Exit!
Symbolic link is : \\?usb#vid_0519&pid_0043#6&1030f7a5&0&2#{28d78fad-5a12-11d1-ae5b-0000f803a8c2}
#
#
USB connection success
R241(RX)_SM_S230_DB_JP_1.4_PGM.bin File loading...
R241(RX)_SM_S230_DB_JP_1.4_PGM.bin File load success.
R241(RX)_SM_S230_DB_JP_1.4_PGM.bin File Size : 524288 BYTE.
Check Sum : EE46h
|
```

4)Select “Write”

```
FW Rewrite Tool for SM-S(USB)
Write! Load File! Port! About! Exit!
Symbolic link is : \\?usb#vid_0519&pid_0043#6&1030f7a5&0&2#{28d78fad-5a12-11d1-ae5b-0000f803a8c2}
#
#
USB connection success
R241(RX)_SM_S230_DB_JP_1.4_PGM.bin File loading...
R241(RX)_SM_S230_DB_JP_1.4_PGM.bin File load success.
R241(RX)_SM_S230_DB_JP_1.4_PGM.bin File Size : 524288 BYTE.
Check Sum : EE46h
|
```

```
FW Rewrite Tool for SM-S(USB)
Write! Load File! Port! About! Exit!
Symbolic link is : \\?usb#vid_0519&pid_0043#6&1030f7a5&0&2#{28d78fad-5a12-11d1-ae5b-0000f803a8c2}
#
#
USB connection success
R241(RX)_SM_S230_DB_US_1.4_PGM.bin File loading...
R241(RX)_SM_S230_DB_US_1.4_PGM.bin File load success.
R241(RX)_SM_S230_DB_US_1.4_PGM.bin File Size : 524288 BYTE.
Check Sum : 9AE9h
R241(RX)_

***Model Name : R241(RX)_***
R241(RX)_

Download Start >>>>>>
Processing.....
Writing data.....
Wait until the printer is reset.

Writing...

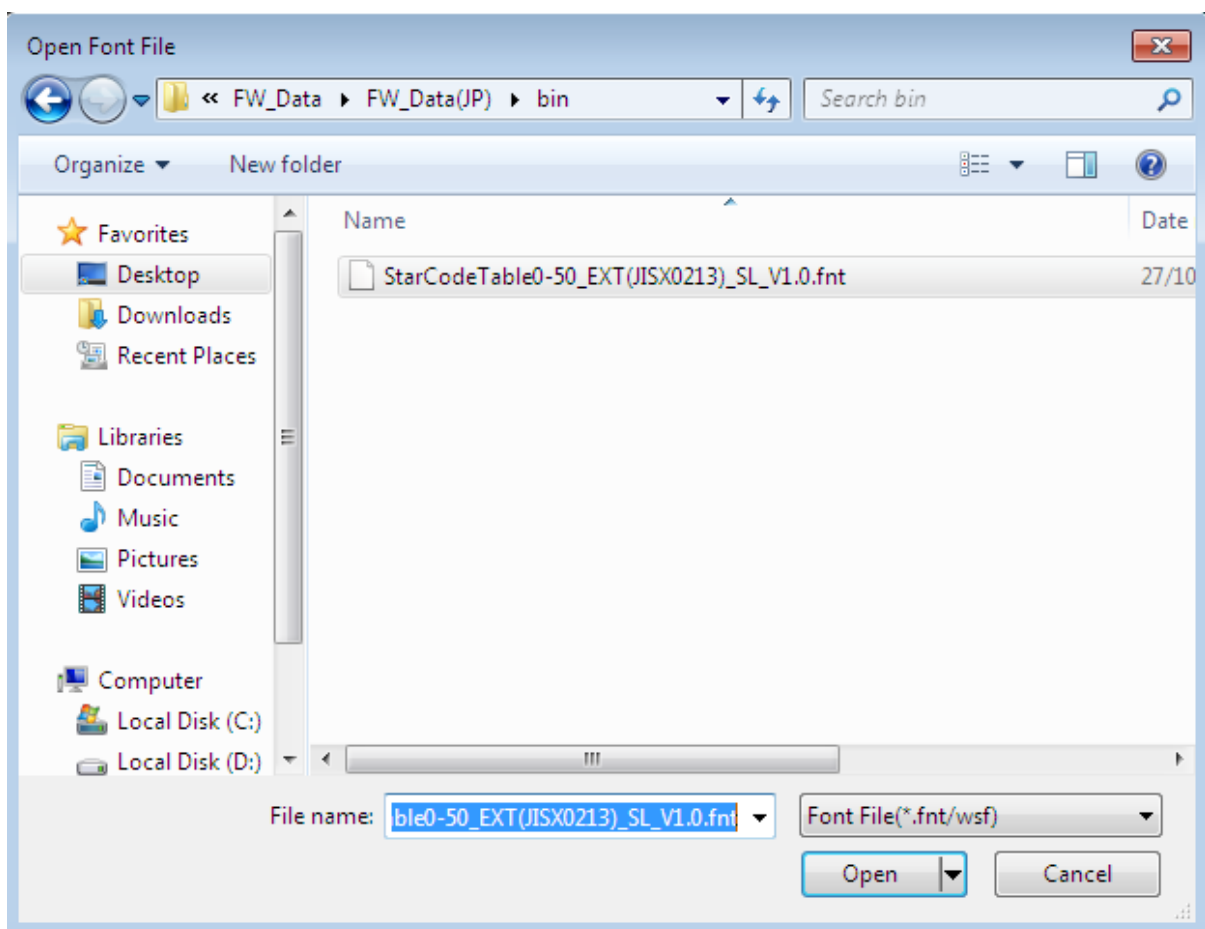
Download Success!!!
>>> USB Disconnection
```

5) After finished ,close FW rewrite tool program and turn printer's power OFF , then test-print (hold the feed and the power button for 3 seconds or more).You can see at the third lines it will show firmware version “[Ver 1.4 2016/07/04]”

## UPDATE FONT(JP)

6) Open the FW rewrite tool again , check your printer connection as steps (2)

7) Select “Load File!” >> Select “Load Font file” >> chose file : “StarCodeTable0-50\_EXT(JISX0213)\_SL\_V1.0.fnt” (Located at SM-S230I\_Ver 1.4\FW\_Data\FW\_Data(JP)\bin) >> Click “Open”



```
FW Rewrite Tool for SM-S(USB)
Write! Load File! Port! About! Exit!
Symbolic link is : \\?usb#vid_0519&pid_0043#6&1030f7a5&0&2#{28d78fad-5a12-11d1-ae5b-0000f803a8c2}
#
#
USB connection success
>>> USB Disconnection
StarCodeTable0-50_EXT(JISX0213)_SL_V1.0.fnt File loading...
StarCodeTable0-50_EXT(JISX0213)_SL_V1.0.fnt File load success.
StarCodeTable0-50_EXT(JISX0213)_SL_V1.0.fnt File Size : 1352832 BYTE.
Check Sum : 4757h
|
```

## 8) Select "write"

```
FW Rewrite Tool for SM-S(USB)
Write! Load File! Port! About! Exit!
Symbolic link is : \\?usb#vid_0519&pid_0043#6&1030f7a5&0&2#{28d78fad-5a12-11d1-ae5b-0000f803a8c2}
USB connection success
StarCodeTable0-50_EXT(JISX0213)_SL_V1.0.fnt File loading...
StarCodeTable0-50_EXT(JISX0213)_SL_V1.0.fnt File load success.
StarCodeTable0-50_EXT(JISX0213)_SL_V1.0.fnt File Size : 1352832 BYTE.
Check Sum : 4757h
R241(RX)_

***Model Name : R241(RX)_***
R241(RX)_

Download Start >>>>>
Processing.....
Writing data.....
Wait until the printer is reset.

Writing...

Success !
```

9)After done turn printer's power off , then self-test the second line will be  
"PRINTER STATUS (JPN)"