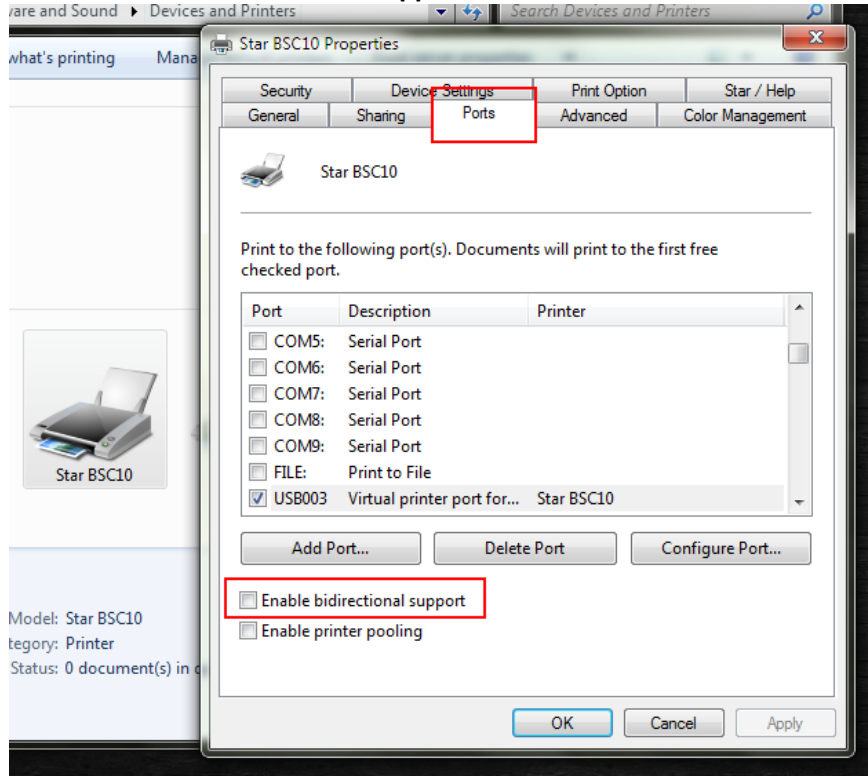


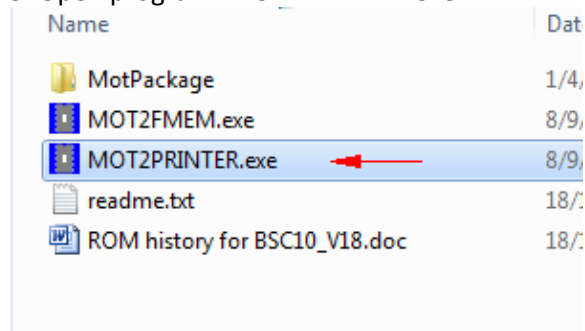


## How to update Font and Firmware for BSC10UD and BSC10UC

1. Open the printer and connect to PC/Laptop by USB Cable.
2. Go to **Devices and Printers** then **Right click** and the printer > click '**Printer Properties**' > click '**Port**' uncheck '**Enable bidirectional support**' then click '**OK**'



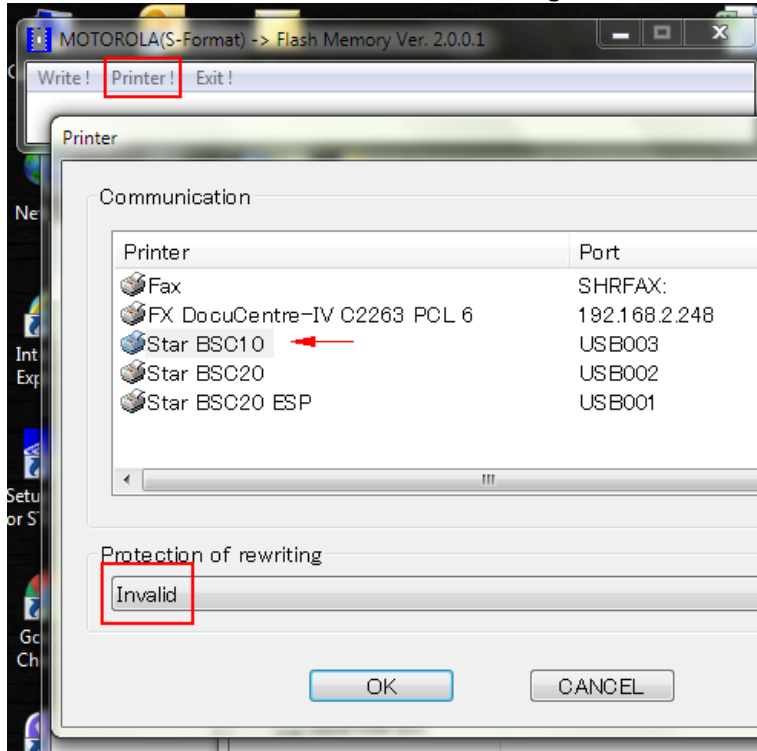
3. Open program '**MOT2PRINTER.exe**'





## How to update Font and Firmware for BSC10UD and BSC10UC

4. Click 'Printer' > choose 'Star BSC10' > change from 'Valid' to 'Invalid' then click 'OK'.

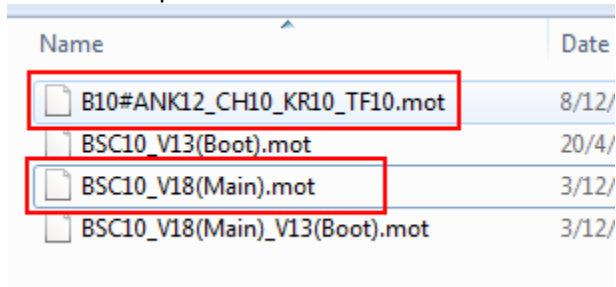


5. Click 'Write' for select file to update (each file) in Folder 'MotPackage'.

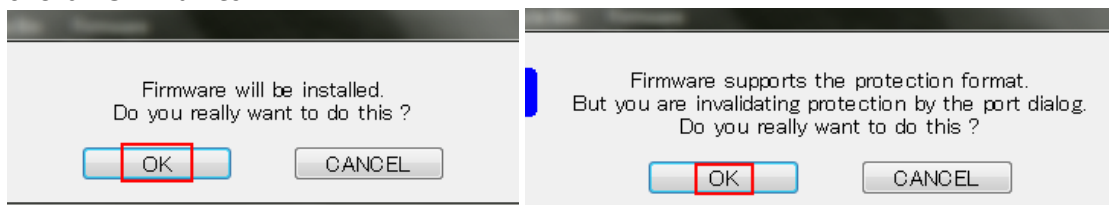
- This file **B10#ANK12\_CH10\_KR10\_TF10.mot** for Update Font Date Version 1.2

- This file **BSC10\_V18(Main).mot** for Update Firmware 1.8

Then click 'Open'



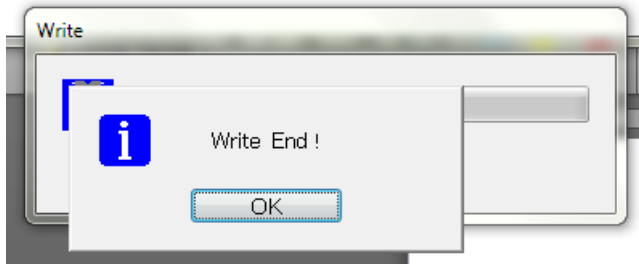
6. Click 'OK' 2 times.









## How to update Font and Firmware for BSC10UD and BSC10UC

7. Light at the printer will flashing and wait until finished will have some noise and will be show 'Write End' on the monitor then click 'OK'.



### How to update Boot Version of BSC10UD/UC Model

1. Open rear cover.
2. Press and hold 'FEED' button and turn printer on in the same time but continue hold 'FEED' button around 15 sec or until light is flashing.
3. Light will flashing then release feed button.
4. Press 'Feed' button 3 times light will be flashing then close rear cover.
5. Looking at the light will be flashing and On.
6. Doing update Boot Process same with Firmware Process but selected file 'BSC10E\_V13(Boot).mot'

name	
 B10#ANK12_CH10_KR10_TF10.mot	8/
 BSC10_V13(Boot).mot	2/
 BSC10_V18(Main).mot	3/
 BSC10_V18(Main)_V13(Boot).mot	3/

**Remark:** Check Firmware Version and Boot Version from Self-Test.