

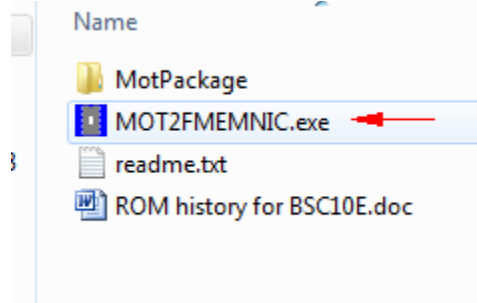


## How to update Font and Firmware of BSC10E

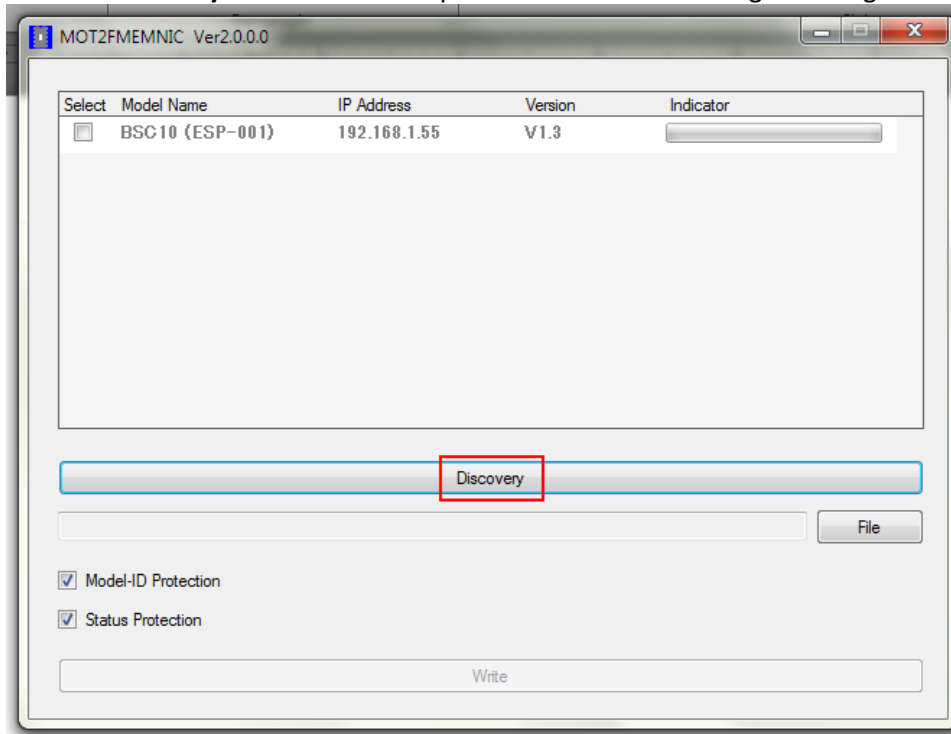
**\*\*Printer should be connecting same local area network\*\***

**\*\*Always select printer before update\*\***

1. Connect Lan cable to printer BSC10E and PC also connect same local area network.
2. Open program '**MOT2FMEMNIC.exe**'



3. Click '**Discovery**' then will see the printer which is connecting including IP Address of the printer.



4. Select printer and after that character will be more density.

Select	Model Name	IP A
<input checked="" type="checkbox"/>	<b>BSC10 (ESP-001)</b>	<b>192</b>



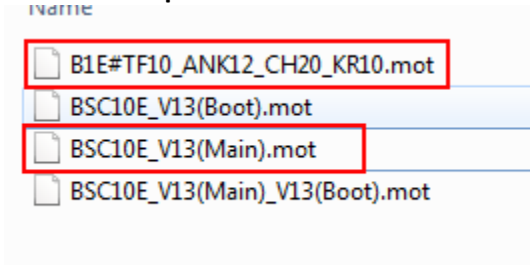
## How to update Font and Firmware of BSC10E

5. Click **'File'** for select the file which you want to update (each file) In Folder > **MotPackage**

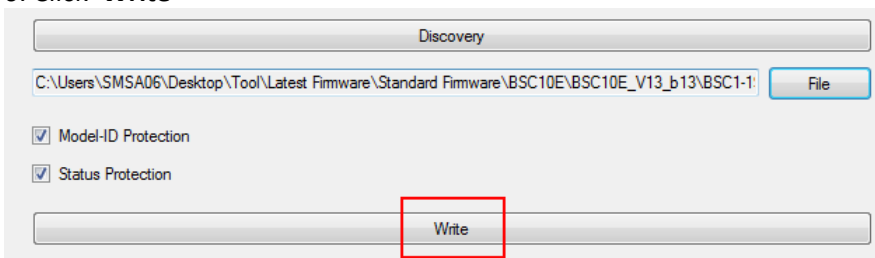
- This file **B1E#TF10\_ANK12\_CH20\_KR10.mot** for Update Font Data Version 1.2

- This file **BSC10E\_V13(Main).mot** for Update Firmware 1.3

Then click **'Open'**



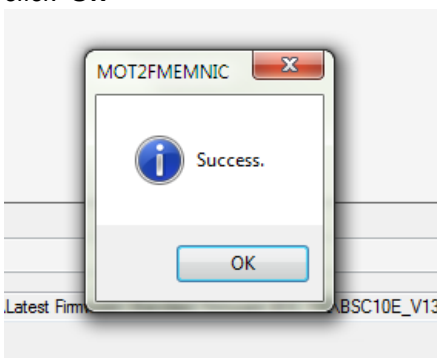
6. Click **'Write'**



7. Look at the light at the printer will be flashing and wait until full green.

Select	Model Name	IP Address	Version	Indicator
<input checked="" type="checkbox"/>	BSC10 (ESP-001)	192.168.1.55	V1.3	

8. When update finished, printer will have some noise and will be show **Success** on the monitor then click **'OK'**









## How to update Font and Firmware of BSC10E

### How to update Boot Version of BSC10E

1. Open rear cover.
2. Press and hold 'FEED' button and turn printer on in the same time but continue hold 'FEED' button around 15 sec or until light is flashing.
3. Light will flashing then release feed button.
4. Press 'Feed' button 3 times light will be flashing then close rear cover.
5. Looking at the light will be flashing and On.
6. Doing update Boot Process same with Firmware Process but selected file **BSC10E\_V13(Boot).mot**

Name	Da
 B1E#TF10_ANK12_CH20_KR10.mot	24
 BSC10E_V13(Boot).mot	13
 BSC10E_V13(Main).mot	13
 BSC10E_V13(Main)_V13(Boot).mot	13

**Remark:** Check Firmware Version and Boot Version from Self-Test.