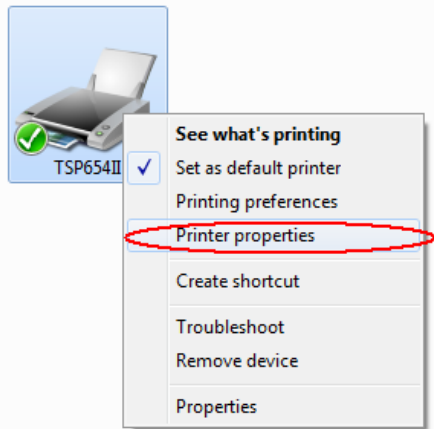
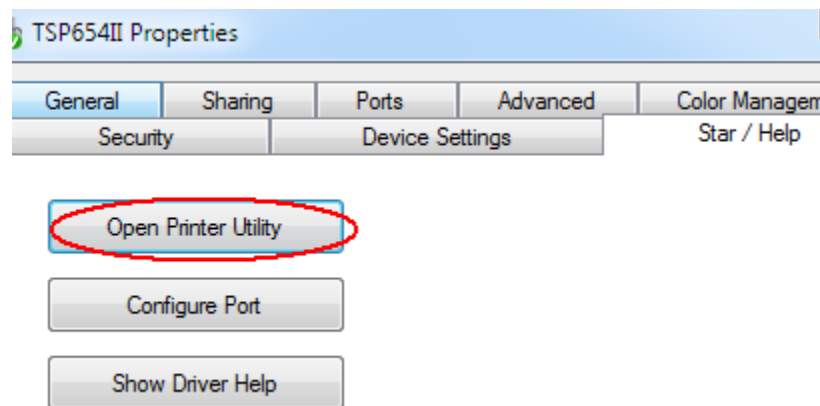


How to setting Double Byte. Large font size,

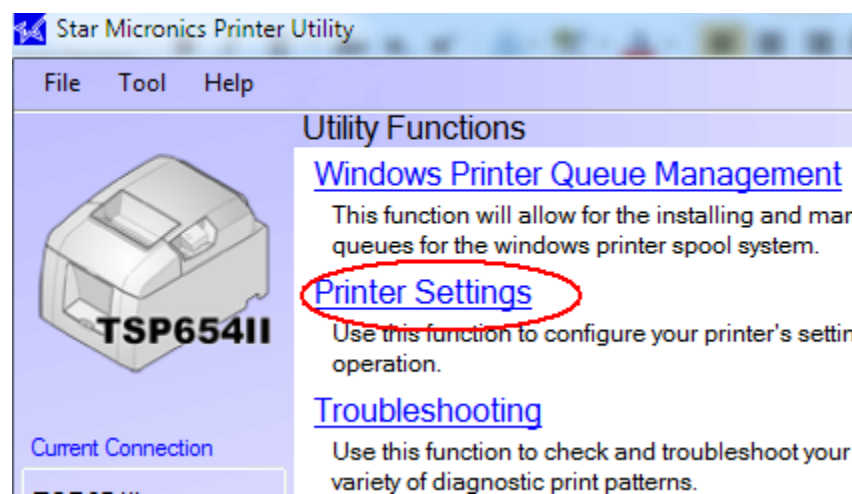
1. Right Click at printer driver >> Select printer properties



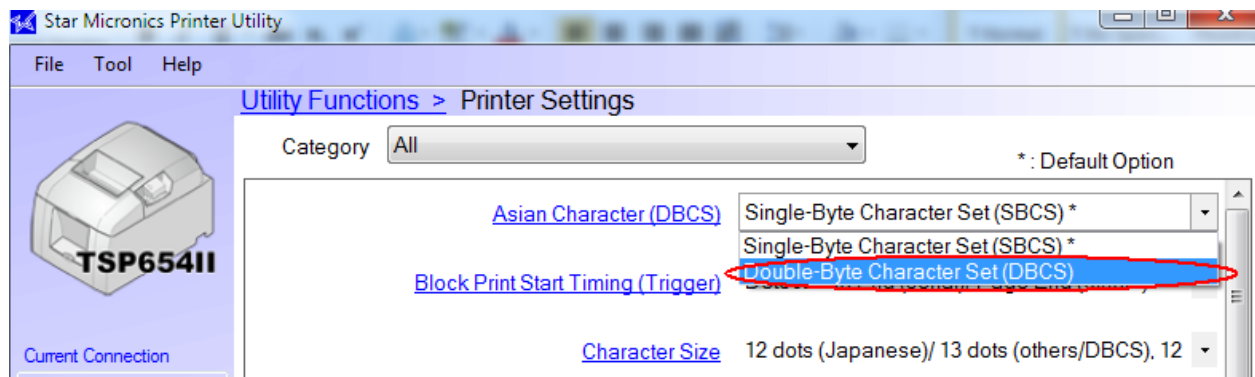
2. Open Printer Utility



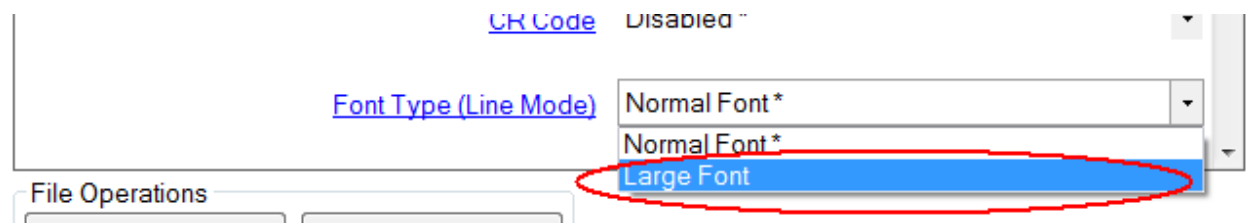
3. Select Printer Setting



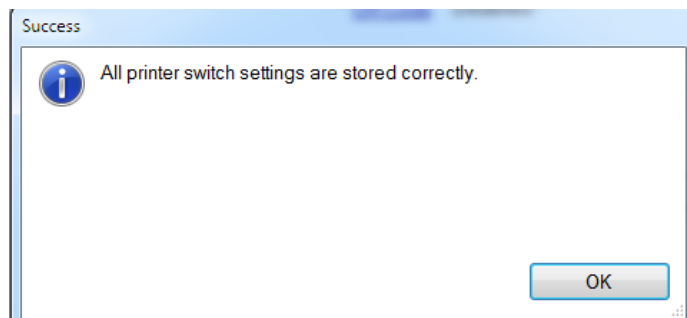
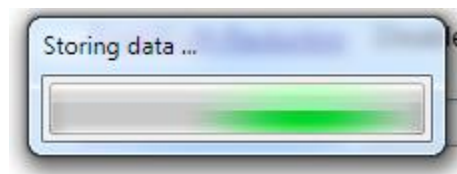
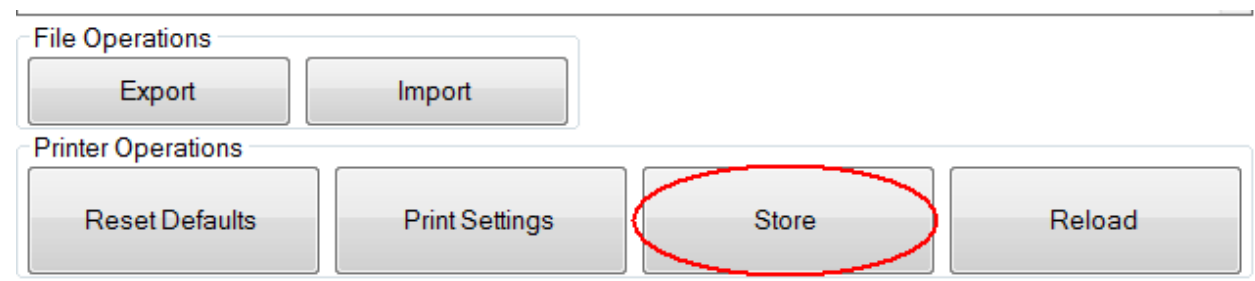
4. Asian Character (DBCS) = “ Double Byte Character Set (DBCS) ”



And Font Type (Line Mode) = “Large Font “



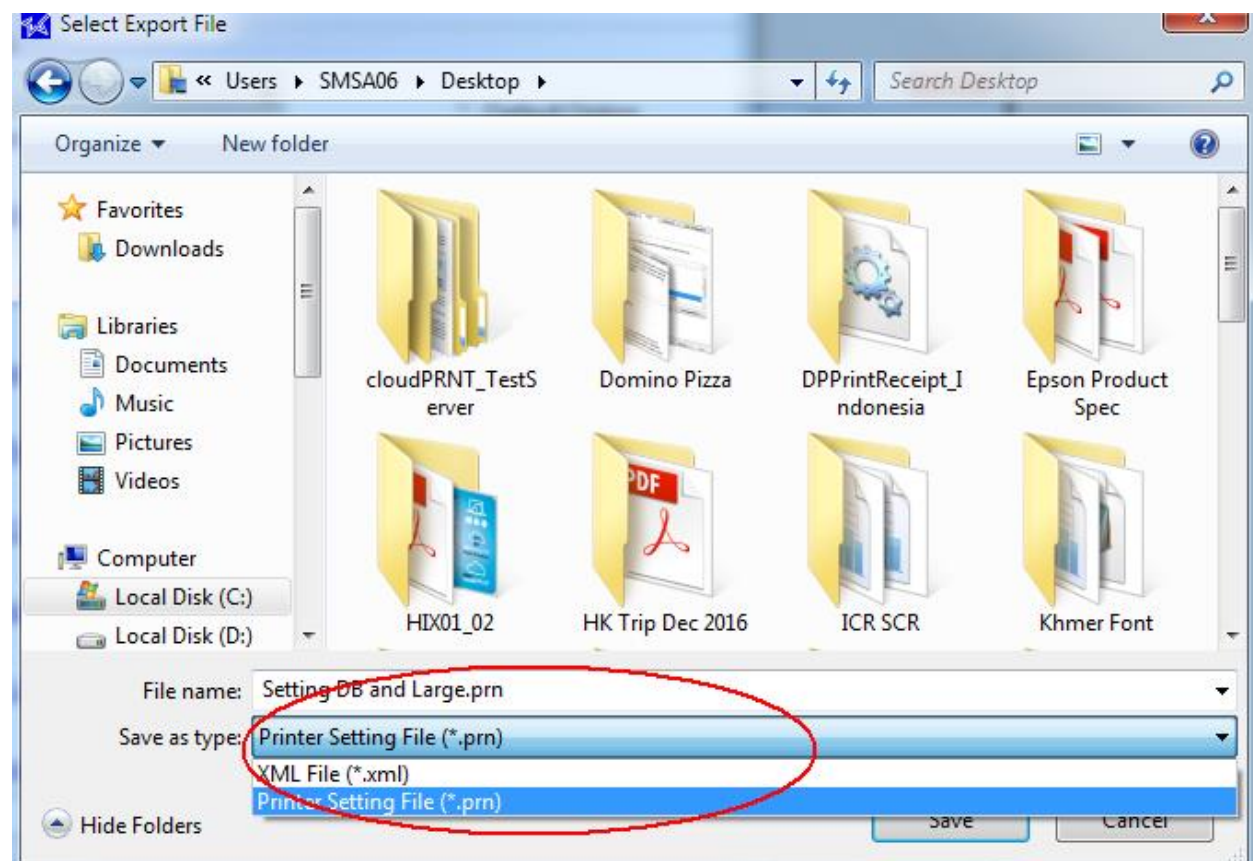
Select Store to Store setting to printer



Export File

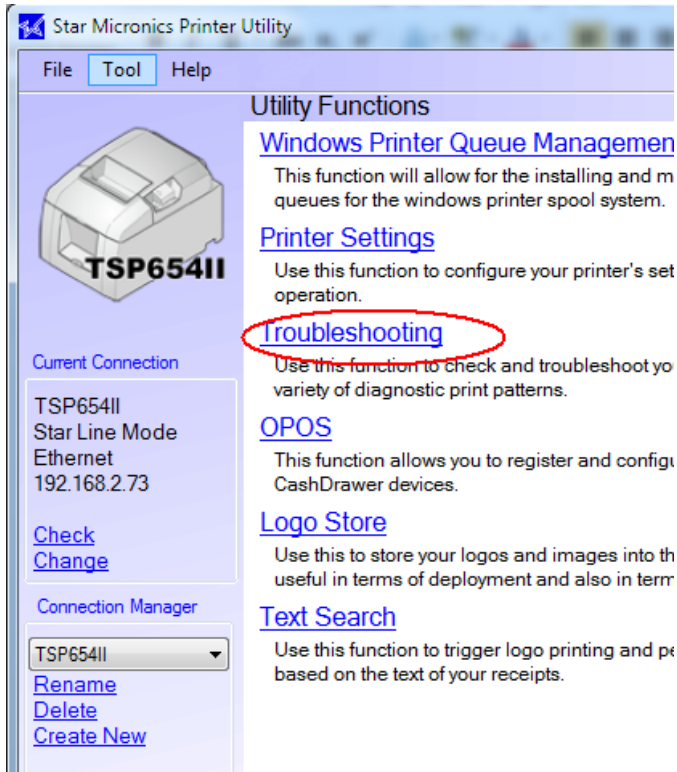


Save File .prn

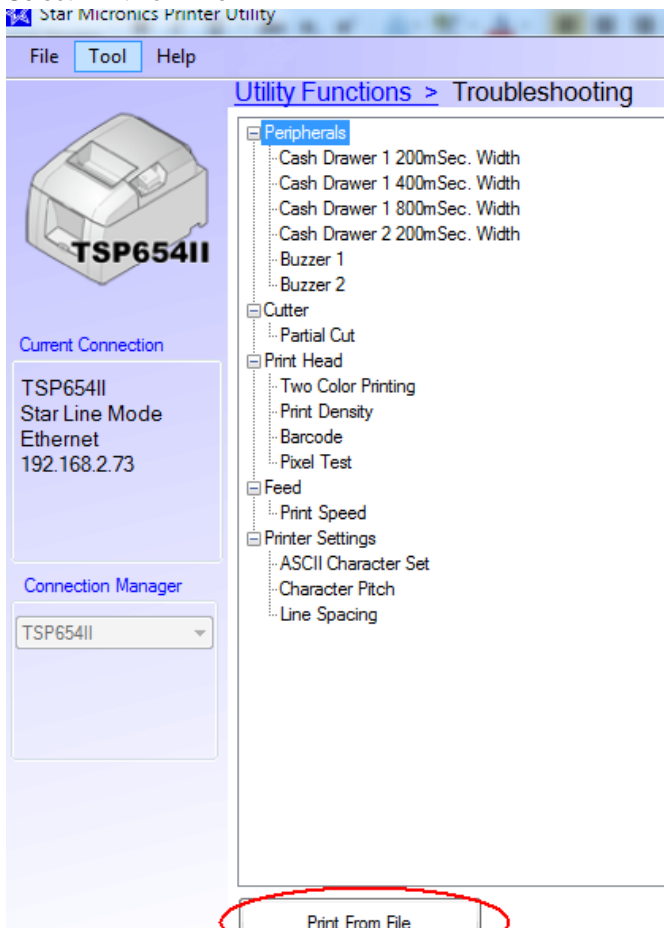


How to import file.

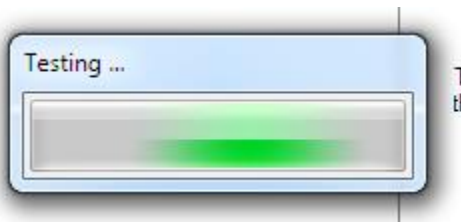
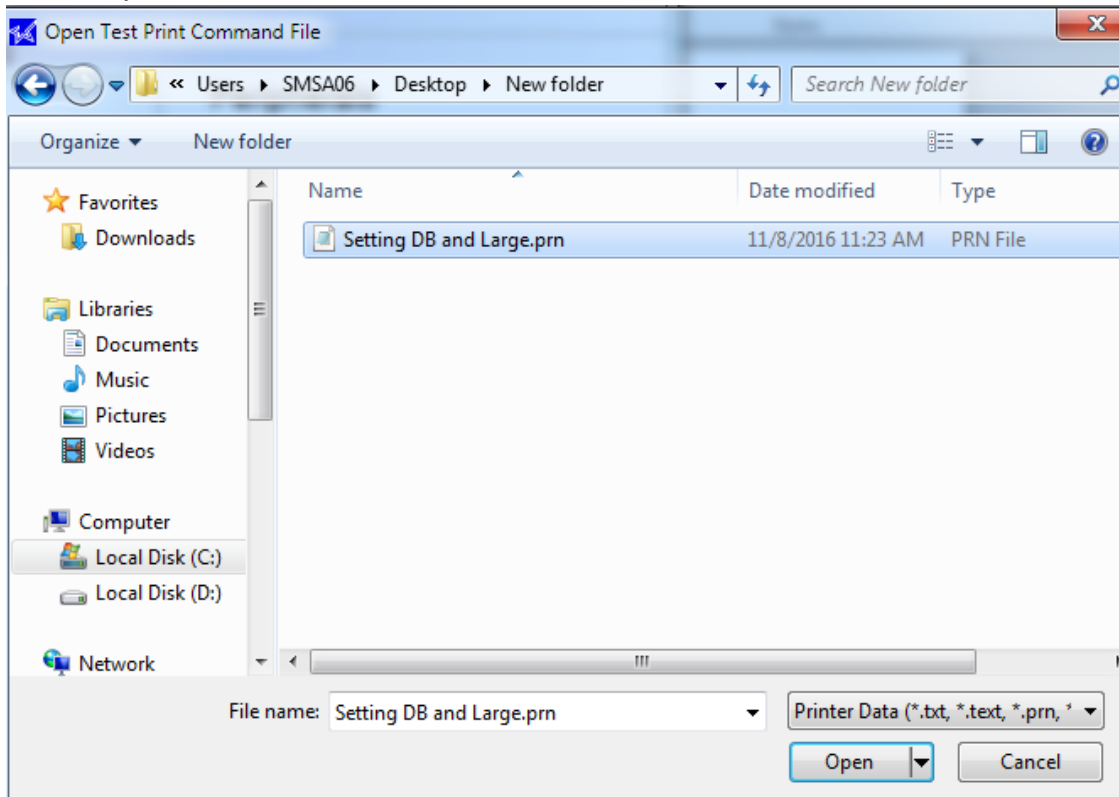
1. Open Utility >> Select “ **Troubleshooting**”



Select Print from File



Select as you saved



And self-test to check configuration was changed