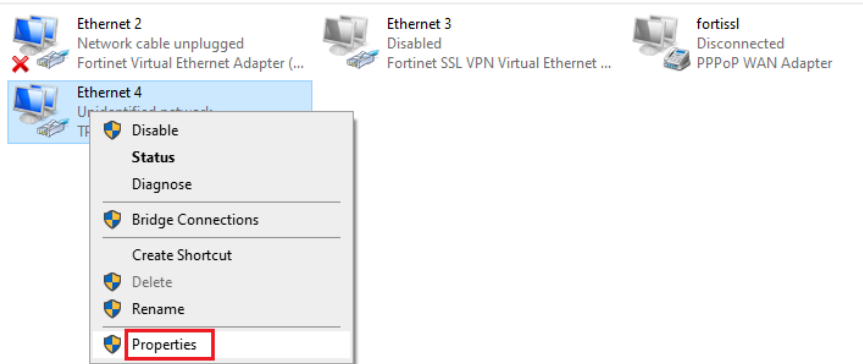




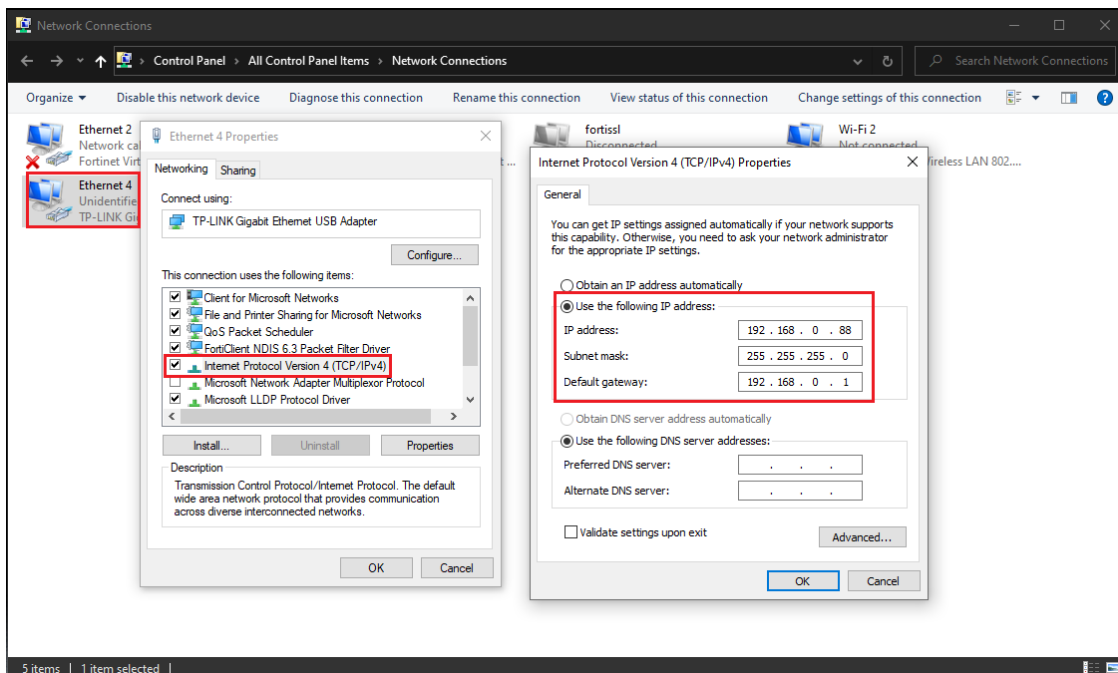
How to set Static IP at the printer without DHCP from Router

****for every printer via using Lan Interface****

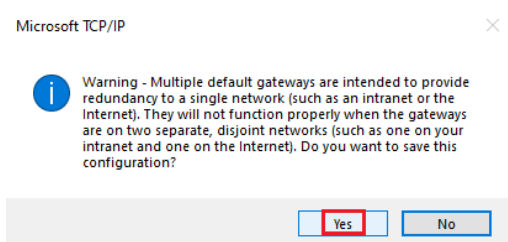
1. Connect LAN Cable between printer and PC/Laptop.
2. After connected will get new network 'Ethernet 4' then right click and select 'Properties'



3. Double click 'Internet Protocol Version 4 (TCP/IPv4)' and choose 'Use the following IP address:' then typing any IP address which you want to setting then click 'OK'



4. Click 'Yes'



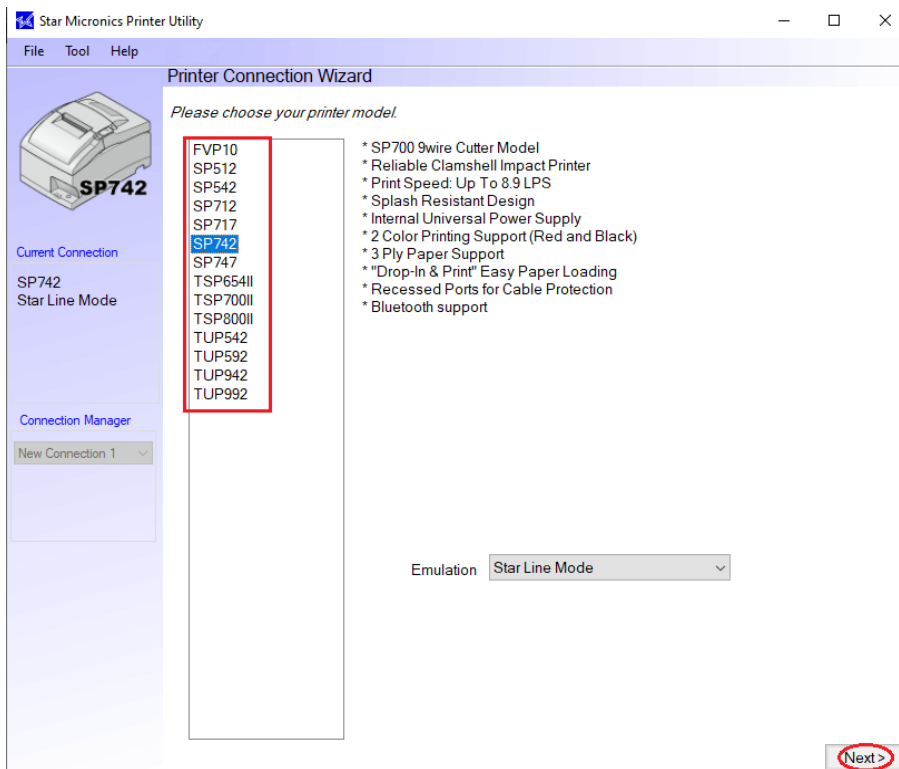


How to set Static IP at the printer without DHCP from Router

5. Go to Printer Utility Star PRNT



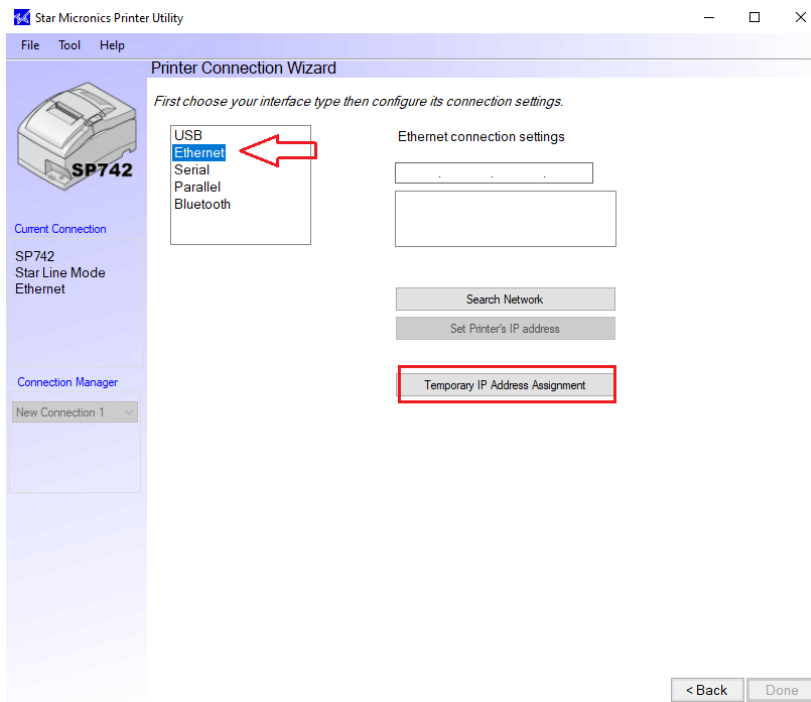
6. Select your printer which your connecting then click 'Next'



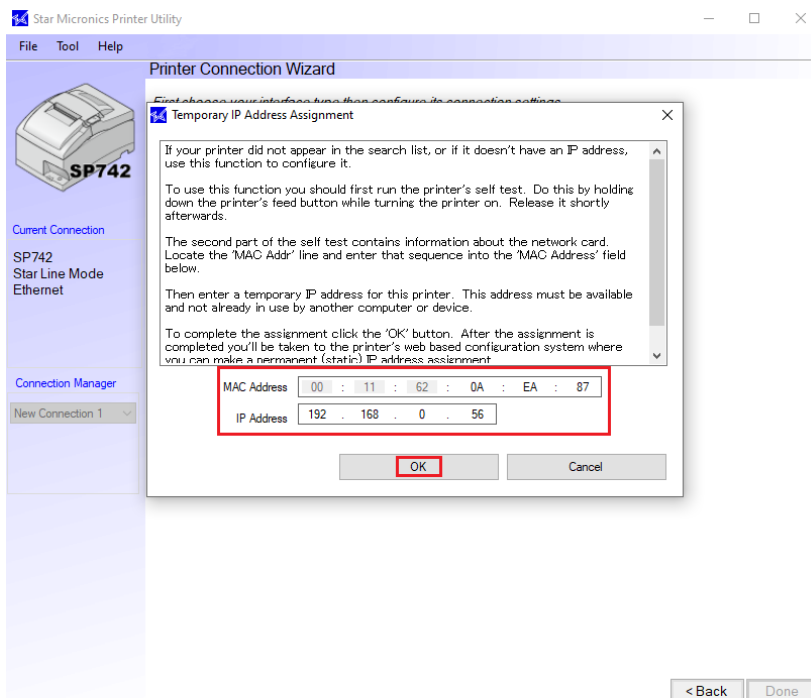


How to set Static IP at the printer without DHCP from Router

7. Click 'Ethernet' then click 'Temporary IP Address Assignment'



8. Typing the MAC Address of the printer (see at the self-test) and also typing the IP Address which you want to setup and click 'OK'





How to set Static IP at the printer without DHCP from Router

9. Then click 'Yes'

Set Printer IP Address ×

? The temporary IP address assignment succeeded.
Do you want to see the printer's network configuration site now?

Log in as "root" user if login dialog is shown.
The password is "public" factory setting.

10. Will open browser automatically and typing username: root / pass: public and click 'sign in'

Sign in

http://192.168.0.56
Your connection to this site is not private.

Username

Password

11. Click 'IP Parameters' and choose 'Static' then setting the IP Address which you want to setting then click 'Submit'

Star IFBD-HE07/08
Network Utility

Contents System Access *Network Configuration* Display Status Contact us

Network Configuration

- IP Parameters
- System Configuration
- Change Password
- SSL/TLS
- Save
- Set Default

Display Status

- Network Card Info.
- Network Status
- Device Info.
- Device Status

System Access

- Logout

Contact us

- Star Web Site
- E-Mail

Device Model: SP742 (STR-001)
MAC Address: 00:11:62:0A:EA:87

IP Parameters

Static //following addresses are used.

IP Address	192.168.0.125
Subnet Mask	255.255.255.0
Default Gateway	192.168.0.1

Dynamic //Addresses are obtained from network.

DHCP/BOOTP	ENABLE
RARP	ENABLE



How to set Static IP at the printer without DHCP from Router

12. Click 'Save'

- Network Configuration
 - IP Parameters
 - System Configuration
 - Change Password
 - SSL/TLS
 - Save
 - Set Default
- Display Status
 - Network Card Info.
 - Network Status
 - Device Info.
 - Device Status
- System Access
 - Logout
- Contact us
 - Star Web Site
 - E-Mail

Device Model: SP742 (STR-001)
MAC Address: 00:11:62:0A:EA:87

Static address condition is accepted!

IP Address : 192.168.0.125
Subnet Mask : 255.255.255.0
Default Gateway : 192.168.0.1

Please execute "Save" menu if these settings are correct.

Return to [Previous page <IP Parameters>](#)

(Don't use "Back" button of browser to return.)

13. Click 'Execute'

Save

Save → Configuration printing → Restart device

Save → Restart device

14. Printer will be printing self-test for interface again. Will see the IP Address which you fixed.

```
<< IFBD-HE07/08 Information >>
MAC Addr :00:11:62:0A:EA:87
Configuration Print :ENABLE

<< IP Parameters -NVRAM- >>
IP Address      :192.168.0.125
Subnet Mask     :255.255.255.0
Default Gateway :192.168.0.1
DHCP/BOOTP     :DISABLE
RARP           :DISABLE
```