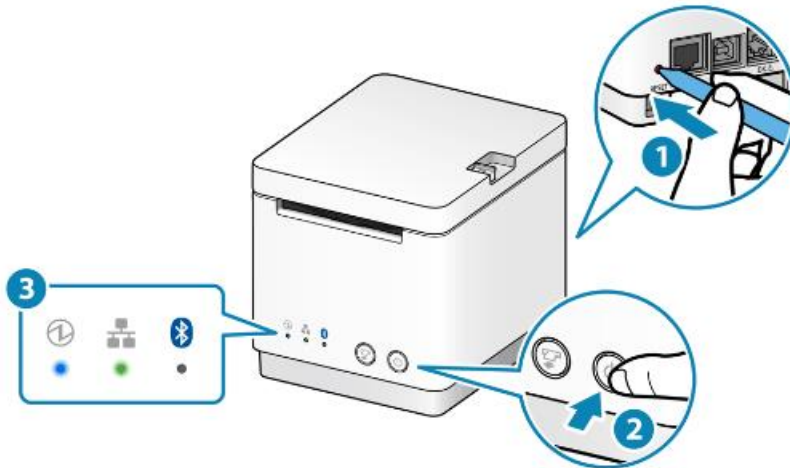


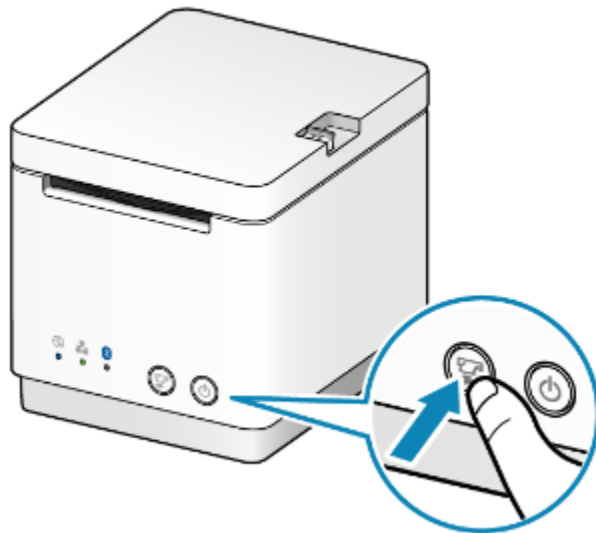
How to reset IP Address to DHCP for Printer mCP20 / mCP21LB

****Turn off the printer first****

1. Look at the behind of the printer, will see the 'Reset' button then input a pen or small screw driver and holding.
2. Turn on the printer.
3. Hold 'Reset' button until LED network flashing.



4. Press and hold 'Feed' button until printer reset. (have a voice)



Initialize Network Settings



When the network settings are initialized, the printer network settings which were changed in Telnet or Web Configuration are restored to their default settings.

5. Print Self-Test for check IP Address again.