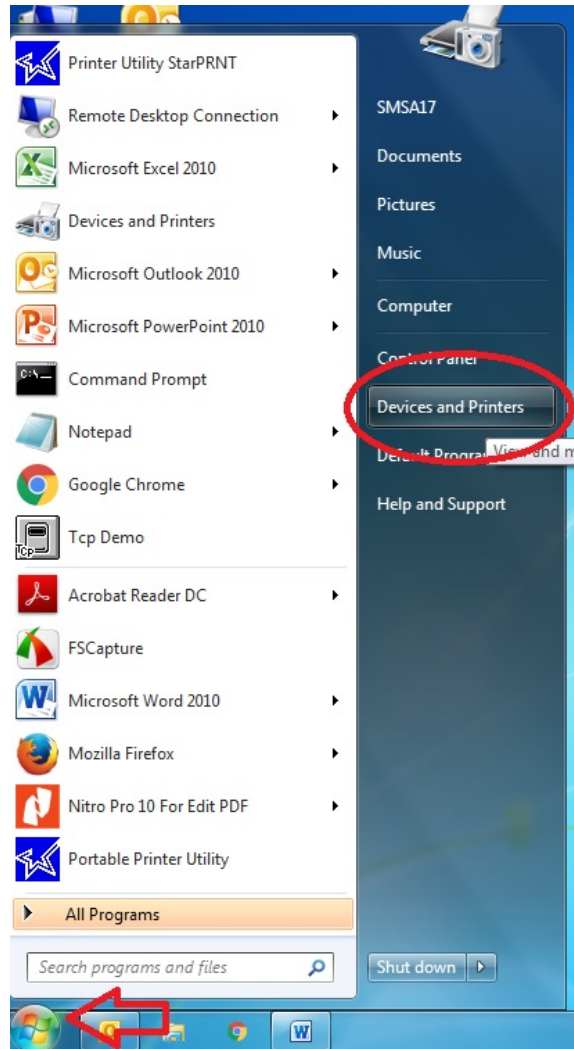




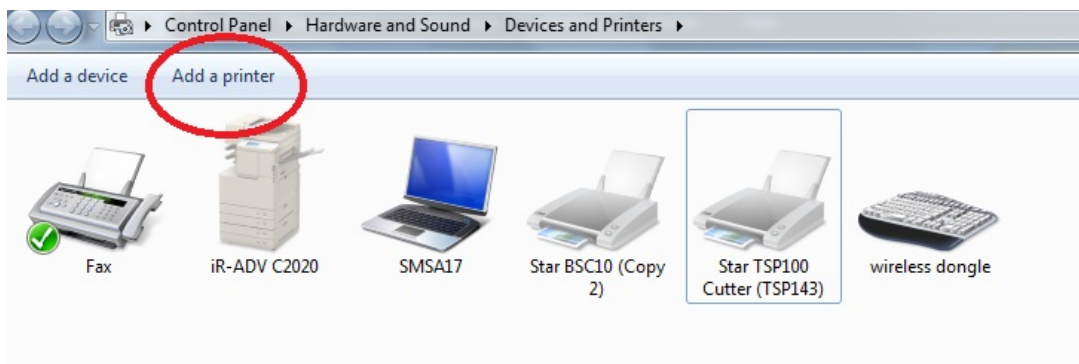
How to install printer driver by yourself

****Please connect USB, Serial or Parallel to PC / Laptop before set up driver****

1. Click 'Start' then click 'Devices and Printers'



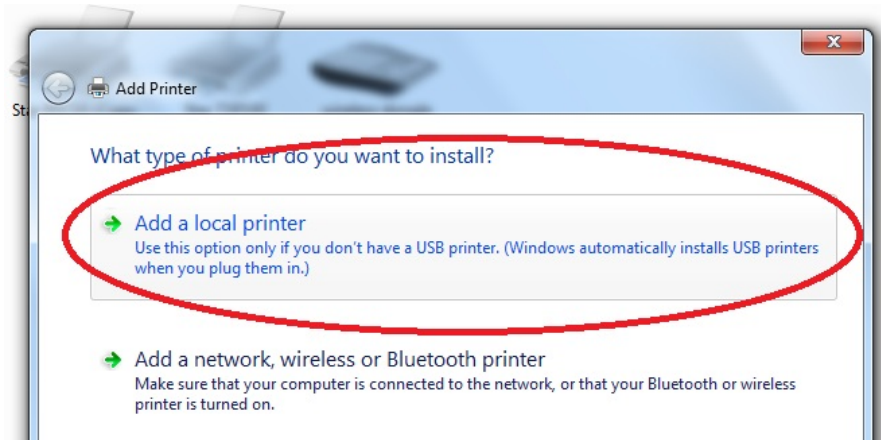
2. Click 'Add a Printer'



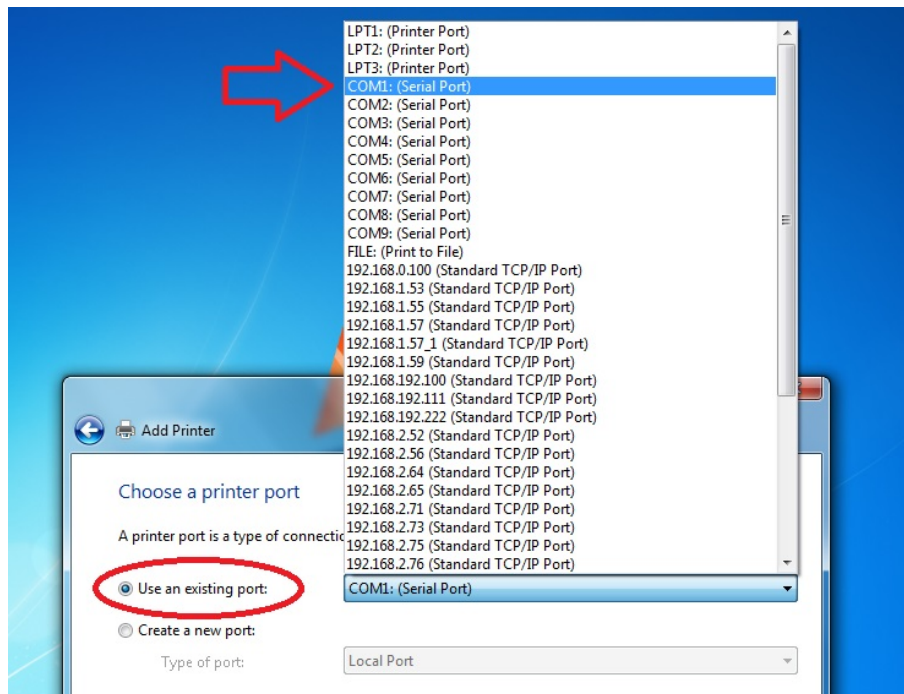


How to install printer driver by yourself

3. After that click **'Add a Local Printer'**



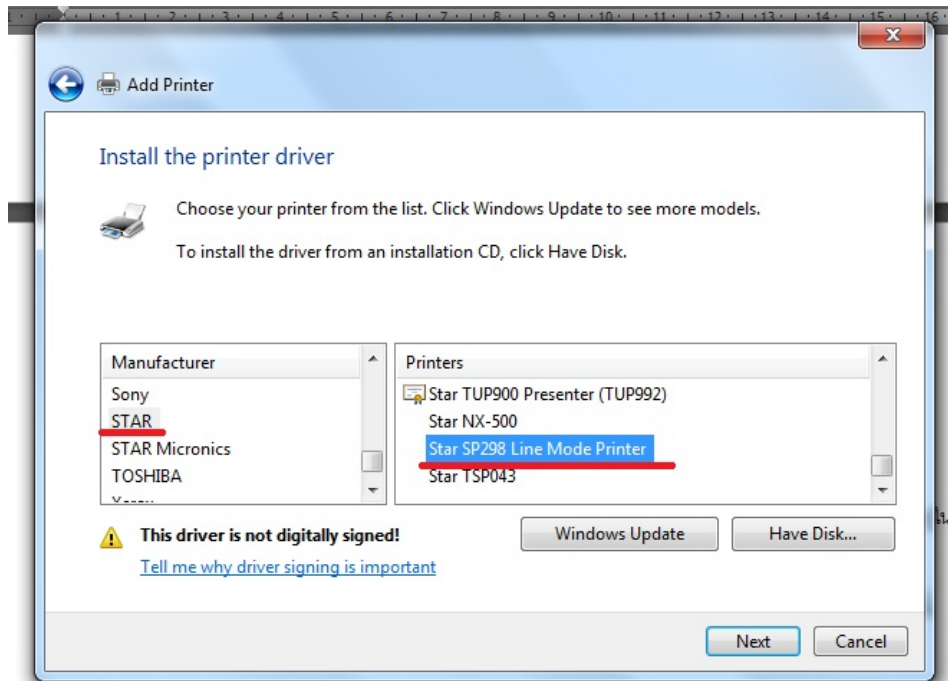
4. Select **'Use an existing port'** Choose Port which you want to connecting such as **'COM1'** then click **'Next'**



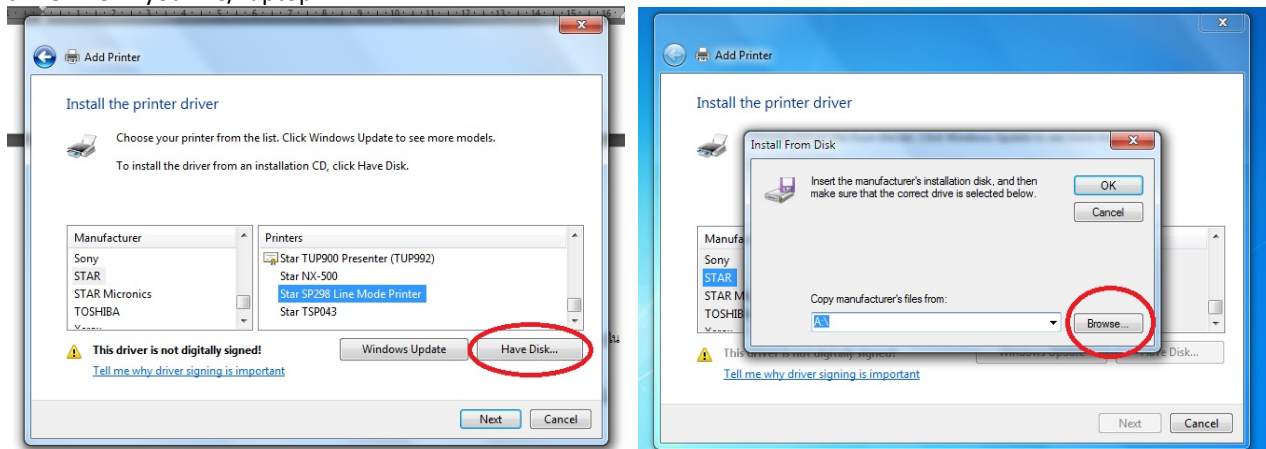


How to install printer driver by yourself

5. Left Side (**Manufacturer**) select printer name which you want such as 'STAR' or 'Star Micronics' and Right Side (**Printers**) select printer model which you want to install such as 'Star SP298 Line Mode Printer' then click 'Next'



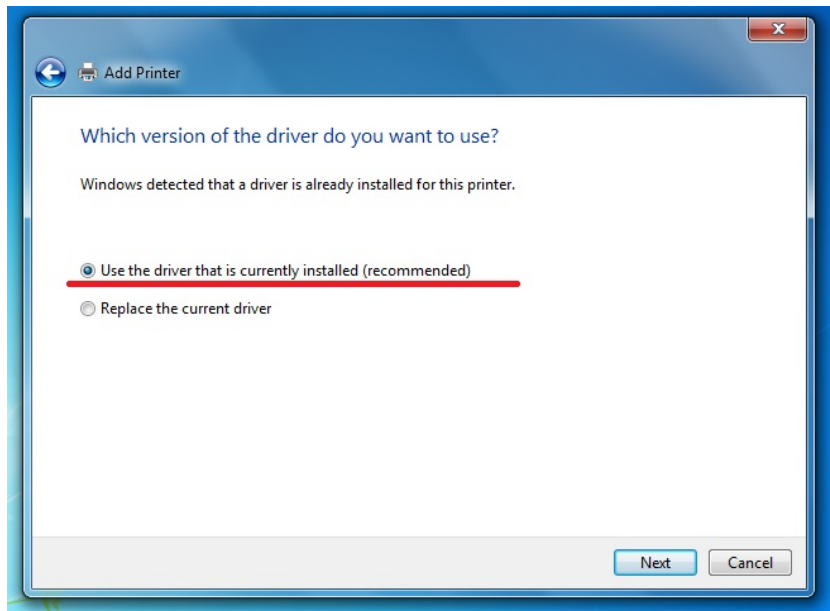
5.1 If not show the printer name which you want, please click 'Have Disk' and click 'Browse' then go to driver file in your PC/Laptop.



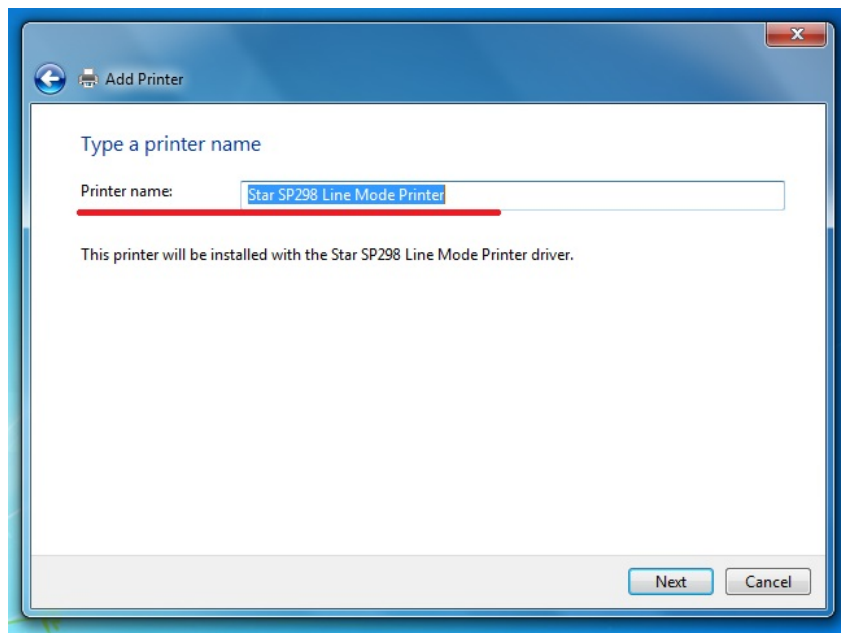


How to install printer driver by yourself

6. Select **'Use the driver that is currently installed (recommended)'** is meaning install new printer driver or if you want to replace the current driver, please select **'Replace the current driver'** then click **'Next'**



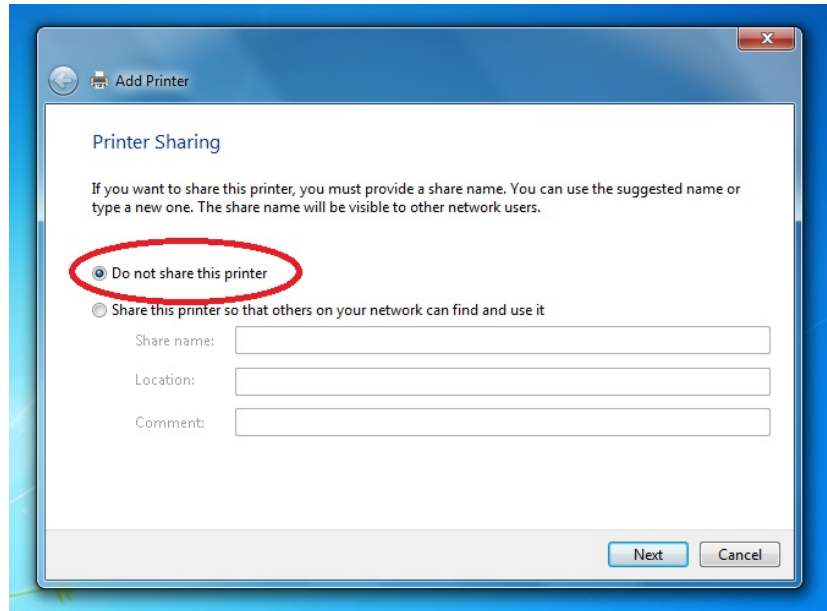
7. Set up the printer name then click **'Next'**, if you don't need to set up the printer name you can click **'Next'** as well.





How to install printer driver by yourself

8. Select **'Do not share this printer'** if you don't need to share this printer or **'Share this printer so that other on your network can find and use it'** if you need to share printer in the same local area network then click **'Next'**



9. Select **'Set as the default printer'** if you need to set this printer as default printer but if you don't need to set, please don't select then click **'Finish'** and then the printer will be show in Devices and Printers.

