

## How to change Memory Switch Setting by mCollection Utility

1. Download mCollection Printer Utility from <http://www.starmicronics.com/support/> and selected follow this picture and click “StarPRNT for mCollection Software” then click “StarPRNT mCollection V2.1 Full 32/64 bit”

Product Type: Thermal  
Printer Family: mC-Print2  
Printer Model: MCP20  
Interface: LAN+USB / LAN+USB+BT  
Operating System: Windows  
Language: English

Reset

Drivers | Manuals | Other Downloads

### Star Micronics mC-Print2 Driver Downloads

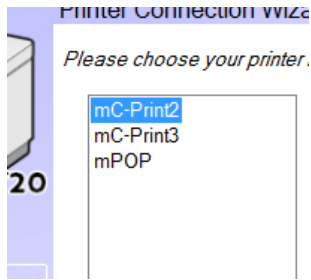
**Recommended:**

- ▶ [StarPRNT for mCollection Software](#)  
Link to the StarPRNT Intelligence Download page includes support for [AirReceipts](#) (digital receipt service), Survey Function, Device management NOW.  
Windows 10 (32/64-bit), Windows 8.1(32/64-bit), Windows 8(32/64-bit), Windows 7(32/64-bit)
- ▶ [StarPRNT for mCollection V2.1 FULL 32/64-bit \(139MB\)](#)  
Installation Package including Drivers, Configuration Utility, OPOS and Manuals  
Windows 10(32/64-bit), Windows 8.1(32/64-bit), Windows 8(32/64-bit), Windows 7(32/64-bit)
- ▶ [StarPRNT for mCollection V2.1 Setup EXE File for Windows 32/64-bit Systems](#)  
No manual included

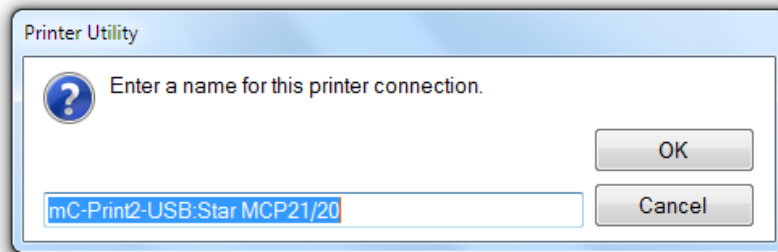
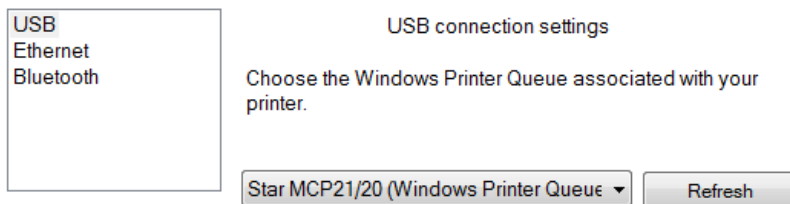
2. Installed Utility

3. Connect USB Cable or Bluetooth from printer to windows then open mCollection Utility Program

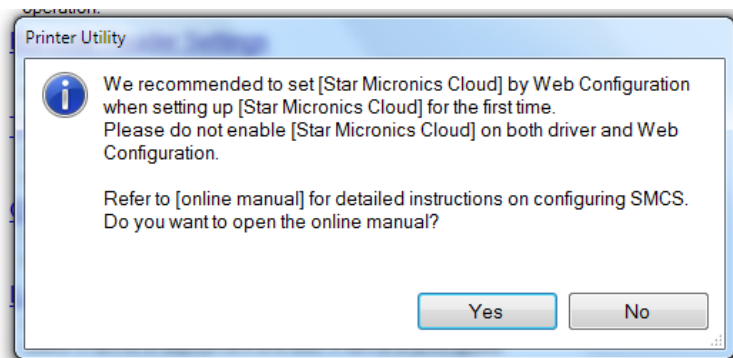
4. Choose model want to install and click “next”



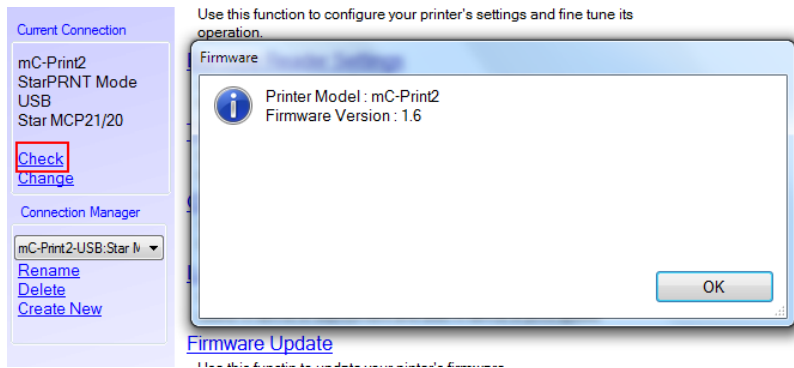
5. Choose your interface connection and click “Done” then enter the name of printer click “OK”



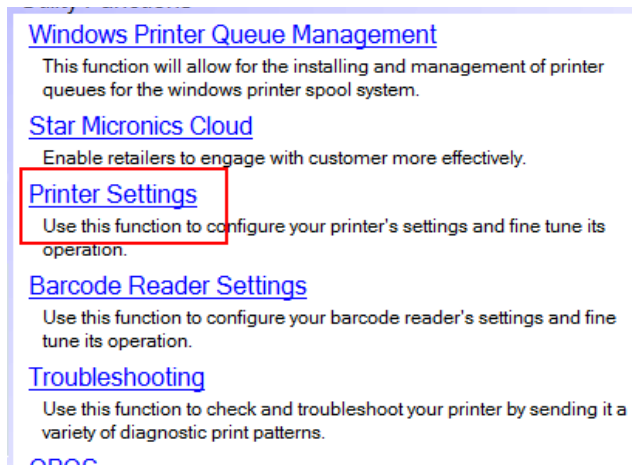
6. Click “yes” if want to open the online manual but “no” if don’t want.



7. Make sure printer connected to PC or Laptop, click “Check” then show the result then click “OK”



8. Click “Print Setting” for change Memory Switch



9. Can change any setting as you want from default, if finished click “Store” for save then click “Print Settings” then printer will printing the self-test, Finished.

- [ASB \(Bluetooth\)](#) Disable \*
- [ASB \(LAN\)](#) Enable \*
- [ASB \(USB Type-A\)](#) Enable \*
- [ASB \(USB Type-B\)](#) Enable \*
- [Asian Character \(DBCS\)](#) Single-Byte Character Set (SBCS) \*
- [Block Print Start Timing \(Trigger\)](#) Detect Page End (All I/F) \*
- [Character Size](#) 12 dots (Japanese)/ 13 dots (others/DBCS).
- [Character Size \(Kanji\)](#)
- [Code Page](#) Normal \*
- [Compression \(Barcode\)](#) Compress \*