

# PRODUCT CATALOG



**star** 





# Introduction

---

Star's solutions provide fast, reliable printing for traditional POS, ticketing and labeling applications along with the flexibility needed to integrate with the very latest Tablet, Cloud and Omni-Channel POS and hospitality solutions.

Star's dedication to leading advances in POS innovation alongside unique Star-developed technologies such as CloudPRNT™ and new SteadyLAN™ has ensured successful installations into some of the world's largest retailers.





# Contents

<b>6</b>	Technology
<b>10</b>	Thermal
<b>12</b>	Dot Matrix
<b>14</b>	Mobile
<b>16</b>	Kiosk
<b>18</b>	Label
<b>20</b>	Spec Sheet

# Technology



# StarXpand

For next generation mobile app development, Star has introduced an industry-first **software development kit (SDK)** for Star printer control for the popular cross-platform framework, React Native.

The SDK is available for Star's current printer range and helps reduce development time and maintenance costs associated with printer control and connection **without restrict about Emulation.**

## StarXpand



Asynchronous Communication



Same API for different OS



Human-Readable Command

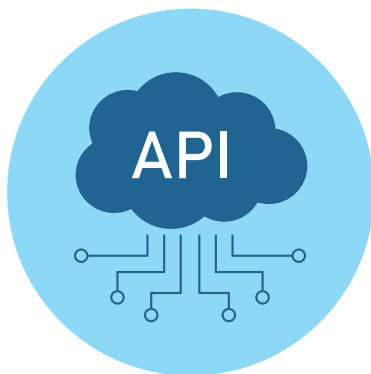


Log Communications

# CloudPRNT



star<sup>cloud</sup>  
cloudPRNT



Cloud API Ready



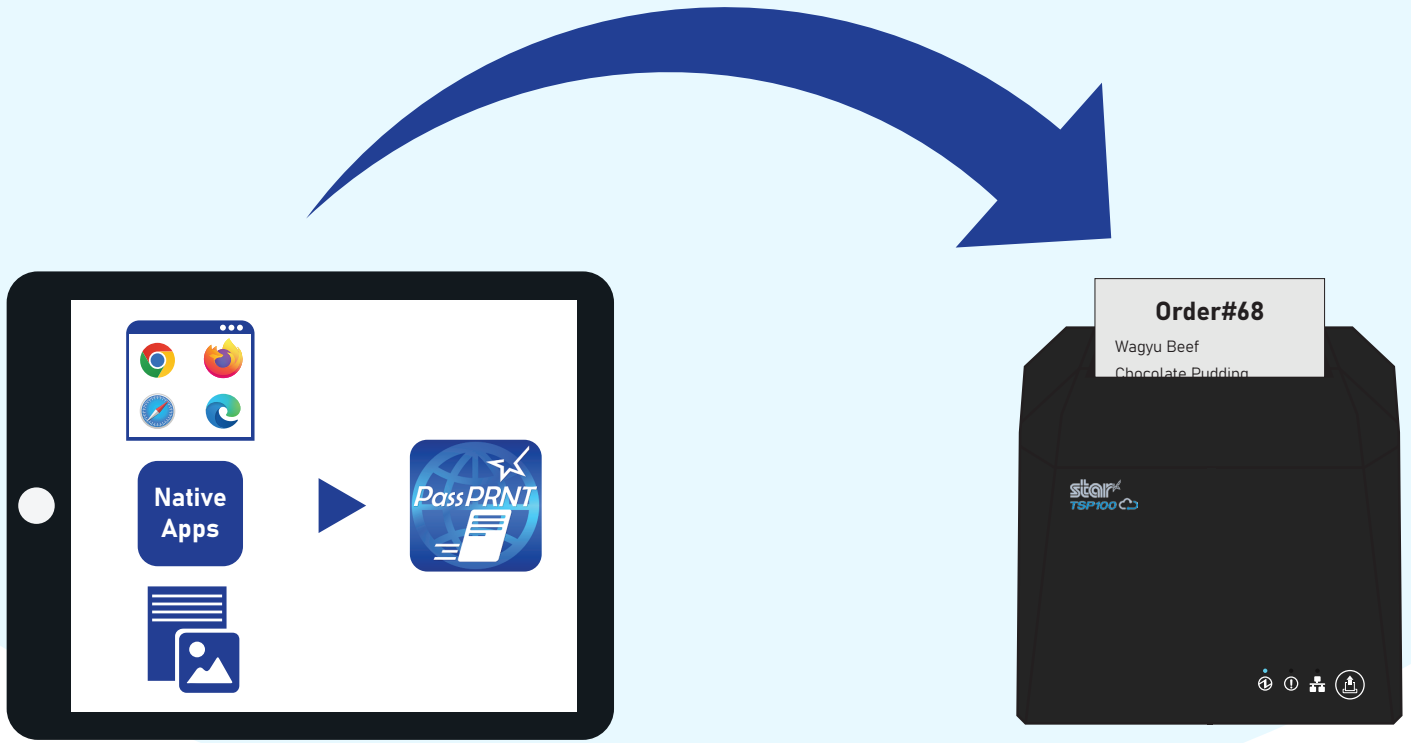
Markup Document



Easy Setup



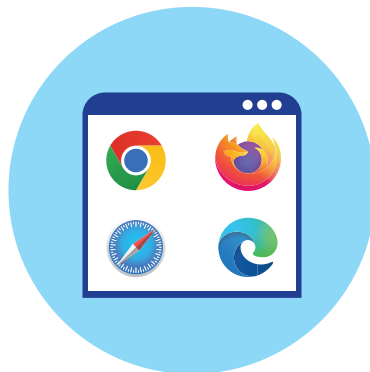
# PassPRNT



star  
PassPRNT



Less Intregation



Compatible any Browser



Application  
Supported

# Thermal Printer





## Star TSP143 Cloud

Star Micronics is proud to introduce the next-generation TSP100 series which is TSP143 Cloud that matches the recent next-generation store solutions with dual interface USB and LAN. It contributes to usability and flexibility in POS and other store systems and efficient inventory management.

**mCollection**



## Star mC-Print3

3-inch thermal printer offers multiple connectivity options including USB, Lightning, Bluetooth, LAN, and CloudPRNT, making the printer adaptable to any future POS system changes. Additionally, multiple connectivity allow for the easy integration of common software.

**mCollection**



## Star mC-Print2

mC-Print2 It is compact and can be used in retail stores. As well as printing receipts in digital form. Ideal for a wide range of applications, from traditional POS systems to connecting to tablet devices or hospitality services.

**mCollection**



## Star mPOP

Star Micronics we've developed the world's first conceptually driven, combined point of purchase cash drawer and printer in response to the need for an easily integrated mobile POS system.

# Dot Matrix Printer





## Star SP700

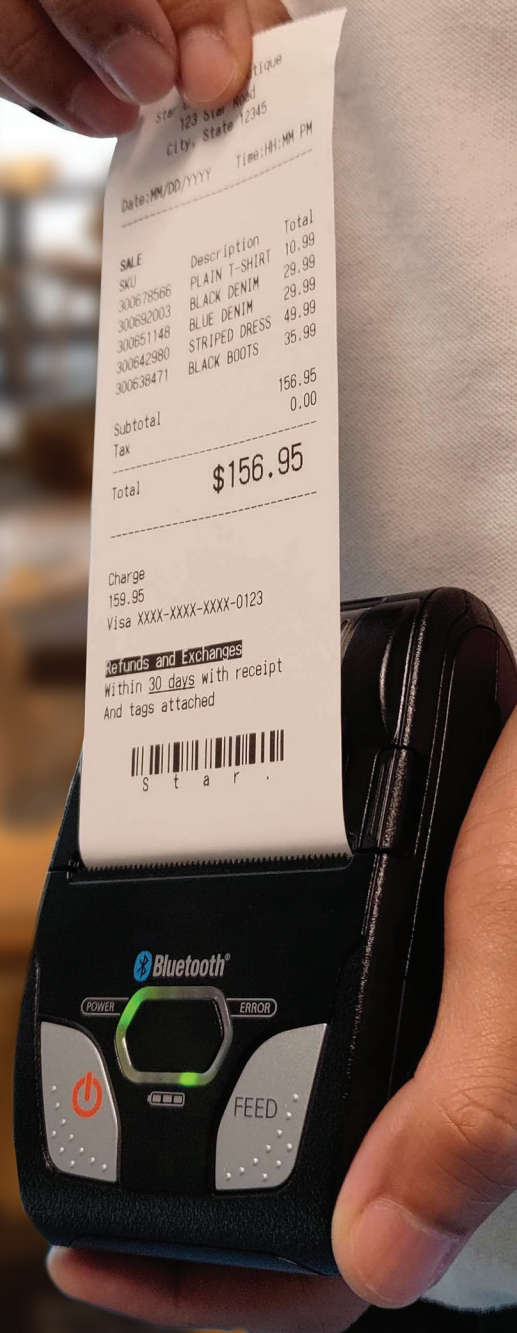
**SP700 is a reliable receipt and kitchen printer for retail and hospitality applications with splash resistant and easy-clean design along with options such as two color printing, wall mount bracket and integrated buzzer alarm option**



## Star SP290

**The SP290 is a compact, robust and reliable matrix slip printer ideal for printing cut sheet media such as pre-printed company branded multi part receipts or forms / cheques.**

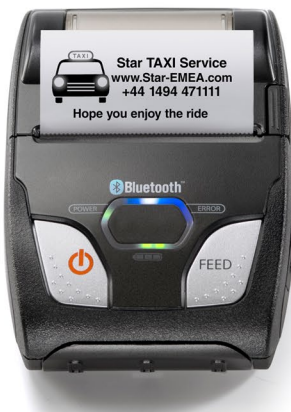
# Mobile Printer





## Star SM-L200

The SM-L200 2-inch Bluetooth mobile receipt and label printer is designed specifically for the growing mobile market in retail, hospitality, logistics and transportation. SM-L200 also supports Bluetooth low energy (BLE 4.0) technology for all iOS mobile devices



## Star SM-S230i

Super compact Bluetooth mobile receipt printer capable of pairing directly with the Apple iPad®, iPhone®, Android™, Windows™ and Linux™ devices. MFi Certified, The SM-S230i features automatic Bluetooth connection with previously paired iPads or iPhones, making it perfect for everyday use in busy environments



## Star SM-T300i

The SM-T300i offers advanced Apple MFi Certification, allowing it to pair seamlessly with iPad®, iPhone® and iPod Touch®, along with all Bluetooth SPP (Serial Port Profile) devices including Android™, Windows™, Linux™ with additional wired serial connection flexibility.



## Star SM-T400i

The Star SM-T400i is a mobile printer offering simple, smart Bluetooth printing. Compatible with all major operating systems including iOS™, Android™, Windows™ and Linux™ with additional wired serial connection flexibility.

# Kiosk Printer

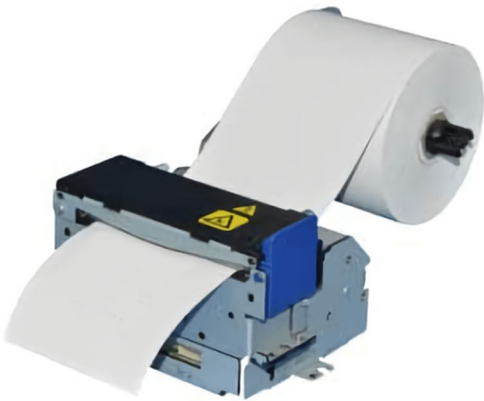






## **SK1-211/311**

**SK1-211/311 is small and ultra-light weight, designed for wide variety of systems and equipments. have a autoloading function and can be selectable for partial cut or full cut. Maximum printing speed 250mm/sec and can support maximum diameter 120mm paper roll as standard.**



## **SK4-21/31**

**SK4-21/31 is small and compact design, can be setup 3-ways of paper position. Support printing speed 150mm/sec. If you are looking for a printer which A good balance of performance and cost, can be selectable this model.**

# Label Printer



mCollection



## Star mC-Label 3

The mC-Label3 caters to all your needs. It's also Cloud Ready, able to connect to Star Micronics Cloud Services. With Star's Cloud Services, the mC-Label3 offers the flexibility to build, store, and later print multiple static receipt/label images at the touch of a button with One Touch Label



## Star TSP143 Cloud SK

TSP143 Cloud SK is liner-free label printer designed to work with liner-free labeling applications. Repositionable thermal labels can stick to virtually any surface, and can be removed easily and reapplied leaving behind no residue. The liner-free labels are an alternative to using silicone-lined labels or tape.








## Star TSP700II







TSP700II ideal for fast, high volume receipting applications which require high quality text, graphics and barcode TSP700II is compatible with the majority of operating platforms including Windows, iOS and Android






## Star TSP800II

The TSP800II is a unique and versatile receipt printer. It is capable of printing on print media up to 112 mm wide. Combined with the unique A4 raster driver capable of scaling A4 images onto 112 mm wide paper, the TSP800II can be incorporated as a receipt printer, ticket printer.

	mC-Print3	mC-Print2	mPOP	TSP143 Cloud	TSP100III
 <p>Always Leading Always Innovating</p>					
<b>PRINTING TYPE</b>	Direct Thermal Printing				
<b>Special Features</b>	<ul style="list-style-type: none"> <li>Stylish, Compact and Sleek Design</li> <li>Smart receipt issuing</li> <li>Support, Native OS, Web &amp; Cloud</li> <li>Multiple Interfaces</li> <li>✦ Paper saving design (Reduce 2mm Top Margin)</li> <li>✦ Splash and insect proof</li> <li>✦ De-Curling function (Flat Receipt)</li> </ul>	<ul style="list-style-type: none"> <li>Stylish, Compact and Sleek Design</li> <li>Smart receipt issuing</li> <li>Support, Native OS, Web &amp; Cloud</li> <li>Multiple Interfaces</li> <li>✦ De-Curling function (Flat Receipt)</li> </ul>	<ul style="list-style-type: none"> <li>Compact, Stylish, and functional</li> <li>Unique combined receipt printer and cash drawer</li> <li>Smart receipt issuing</li> <li>✦ De-Curling function (Flat Receipt)</li> </ul>	<ul style="list-style-type: none"> <li>Stylish &amp; Compact design</li> <li>Equipped with dual interface</li> <li>Android Friendly (Android Open Accessory)</li> <li>Abundant software development environment</li> <li>✦ Star Micronics Cloud Service</li> </ul>	<ul style="list-style-type: none"> <li>The most perfect printer solution for Mobile Point of Sale (mPOS)</li> <li>High-speed printing 250mm/Sec</li> <li>Easy connection with all interfaces</li> <li>Smart receipt issuing</li> <li>✦ De-Curling function (Flat Receipt)</li> </ul>
<b>Supported Media</b>	Thermal paper	Thermal paper	Thermal paper	Thermal paper	Thermal paper
<b>Star Innovation Support</b>	PassPRNT, CloudPRNT, SteadyLAN	PassPRNT, CloudPRNT, SteadyLAN	PassPRNT	PassPRNT, CloudPRNT	PassPRNT
<b>Printing Speed</b>	250 mm/sec	100 mm/sec	100 mm/sec	250 mm/sec	250 mm/sec
<b>Dimension (W x D x H)</b>	132 x 140 x 125 mm	96 x 113 x 100 mm	308 x 300 x 100 mm	140 x 169 x 123 mm	142 x 204 x 132 mm
<b>Command Type Supported</b>	StarPRNT	StarPRNT	StarPRNT	StarPRNT	Star Graphic
<b>Paper Width</b>	58 mm / 80 mm	58 mm	58 mm	58 mm / 80 mm	58 mm / 80 mm
<b>Paper Diameter</b>	83 mm	50 mm	50 mm	83 mm	83 mm
<b>Paper Thickness</b>	0.053 - 0.075 mm	0.053 - 0.075 mm	0.053 - 0.075 mm	0.049 ~ 0.085 mm	0.053 - 0.085 mm
<b>Printing Width</b>	48 mm / 50.8 mm / 72 mm	48 - 54 mm	48 mm / 50.8 mm / 72 mm	48mm / 50.8mm / 72 mm	51 mm / 72 mm
<b>Interface Connectivity</b>	<p>mCP31L USB Type-A(Scanner(ID&amp;2D), USB Lightning Port, USB Type-B, Ethernet(RJ-45), DK-Port(RJ-11))</p> <p>mCP31LB USB Type-A(Scanner(ID&amp;2D), USB Lightning Port, USB Type-B, Bluetooth, Ethernet(RJ-45), DK-Port(RJ-11))</p> <p>mCP31C USB Type-A(Scanner(ID&amp;2D), USB Type-C, Ethernet(RJ-45), DK-Port(RJ-11))</p> <p>mCP31CB USB Type-A(Scanner(ID&amp;2D), USB Type-C, Bluetooth, Ethernet(RJ-45), DK-Port(RJ-11))</p>	<p>mCP20 USB Type-B, Ethernet(RJ-45), DK-Port(RJ-11)</p> <p>mCP21 USB Type-B, USB Type-A(Scanner(ID&amp;2D), Customer Display), USB Lightning Port, Ethernet(RJ-45), Bluetooth, DK-Port(RJ-11)</p>	<p>mPOP Bluetooth, USB Type-A (Scanner(ID&amp;2D), Customer Display), USB Type-B,</p> <p>mPOPCL USB Type-A (Scanner(ID&amp;2D), Customer Display), USB Type-B, USB Type-C</p>	<p>USB Type-C, USB Type-A, Ethernet, DK-Port(RJ-11)</p>	<p>TSP143IIU USB Type-B, USB Lightning Port, DK Port(RJ-11)</p> <p>TSP143IIIL Ethernet(RJ-45), USB Type-A(Power Port), DK Port(RJ-11)</p> <p>TSP143IIIBi Bluetooth, USB Type-A(Power Port), DK Port(RJ-11)</p> <p>TSP143IIIW USB Type-A(Power Port), DK Port(RJ-11), Wi-Fi</p>
<b>Cutter Type</b>	Guillotine (Partial Cut)	Guillotine (Partial Cut) Full Cut	Guillotine (Partial Cut) Full Cut	Guillotine (Partial Cut)	Guillotine (Partial Cut)
<b>Barcode Supported</b>	<p>1D : UPC-A, UPC-E, JAN/EAN8, JAN/EAN13, ITF, CODE39, CODE93, CODE128, CODABAR (NW-7), GS1-128, GS1 Omnidirectional, GS1 Truncated, GS1 Limited, GS1 Expanded</p> <p>2D : PDF417, GS1 Stacked, GS1 Stacked Omnidirectional, GS1 Expanded Stacked, QR Code, GS1 Composite Symbols</p>	<p>1D : UPC-A, UPC-E, JAN/EAN8, JAN/EAN13, ITF, CODE39, CODE93, CODE128, CODABAR (NW-7), GS1-128, GS1 Omnidirectional, GS1 Truncated, GS1 Limited, GS1 Expanded</p> <p>2D : PDF417, GS1 Stacked, GS1 Stacked Omnidirectional, GS1 Expanded Stacked, QR Code, GS1 Composite Symbols</p>	<p>1D : UPC-A, UPC-E, JAN/EAN8, JAN/EAN13, ITF, CODE39, CODE93, CODE128, CODABAR (NW-7), GS1-128, GS1 Omnidirectional, GS1 Truncated, GS1 Limited, GS1 Expanded</p> <p>2D : PDF417, GS1 Stacked, GS1 Stacked Omnidirectional, GS1 Expanded Stacked, QR Code, GS1 Composite Symbols</p>	<p>1D : UPC-A, UPC-E, JAN/EAN8, JAN/EAN13, ITF, CODE39, CODE93, CODE128, CODABAR (NW-7), GS1-128, GS1 Omnidirectional, GS1 Truncated, GS1 Limited, GS1 Expanded</p> <p>2D : PDF417, GS1 Stacked, GS1 Stacked Omnidirectional, GS1 Expanded Stacked, QR Code, GS1 Composite Symbols</p>	<p>1D : UPC-A/E, JAN/EAN8, JAN/EAN13, ITF, CODE39, CODE93, CODE128, CODEBAR(NW-7)</p> <p>2D : PDF417, QR Code</p>
<b>Reliability</b>	Mechanism Life : 20 million lines MCBF : 60 million lines Head Life : 100 km Cutter Life : 1 million cuts	Mechanism Life : 20 million lines MCBF : 60 million lines Head Life : 100 km Cutter Life : 1 million cuts	Mechanism Life : 20 million lines MCBF : 60 million lines Head Life : 100 km Cutter Life : 1 million cuts	Mechanism Life : 20 million lines MCBF : 60 million lines Head Life : 100 km Cutter Life : 2 million cuts	Mechanism Life : 20 million lines MCBF : 60 million lines Head Life : 100 km Cutter Life : 2 million cuts
<b>Sensor</b>	Out of Paper Sensor(PE Sensor) Paper Near End Sensor Cover Open Sensor	Out of Paper Sensor(PE Sensor) Cover Open Sensor	Out of Paper Sensor(PE Sensor)	Out of Paper Sensor(PE Sensor) Cover Open Sensor	Out of Paper Sensor(PE Sensor) Cover Open Sensor

BSC10	TSP650II	TSP700II	TSP800II	mC-Label3	TSP143 Cloud SK
				<b>Collection</b> 	
<b>Direct Thermal Printing</b>					
<ul style="list-style-type: none"> <li>Provide essential function for the target market with attractive pricing</li> <li>Easy maintenance</li> <li>High reliability (Star Standard)</li> <li>Supported ESC/POS</li> </ul>	<ul style="list-style-type: none"> <li>Splash proof cover &amp; Vertical display stand option</li> <li>Wall mount included</li> <li>Supported by Browser Application</li> <li>Supported ESC/POS</li> <li>TSP650IIHIX with and CloudPRNT support.</li> </ul>	<ul style="list-style-type: none"> <li>Splash &amp; dust proof design</li> <li>Barcode, Label, Ticket &amp; receipt printer available</li> <li>Apple Mfi certified bluetooth connectivity</li> </ul>	<ul style="list-style-type: none"> <li>112 mm wide paper format</li> <li>Automatic A4 to A6 scalable driver</li> <li>Barcode, label &amp; ticket printer</li> <li>Apple Mfi certified bluetooth connectivity</li> </ul>	<ul style="list-style-type: none"> <li>Multiple connectivity options for Android &amp; Windows</li> <li>Cloud-based printing with networked device</li> <li>Prints on various media</li> <li>One Touch Label stores pre-made receipts &amp; labels for easy printing</li> </ul>	<ul style="list-style-type: none"> <li>The linerless sticky label printer of the TSP100IV series</li> <li>Come with compact size</li> <li>Has ECO-friendly function</li> </ul>
Thermal paper	Thermal paper	Thermal / Label paper	Thermal / Label paper	All types of media	Thermal / Sticky paper
	PassPRNT, CloudPRNT	PassPRNT, CloudPRNT	PassPRNT, CloudPRNT	PassPRNT, CloudPRNT	PassPRNT, CloudPRNT
250 mm/sec	300 mm/sec	250 mm/sec	180 mm/sec	180 mm/sec	180 mm/sec
142 x 212 x 149 mm	142 x 203.5 x 132 mm	147 x 213 x 148 mm	180 x 213 x 148 mm	143 x 212 x 169 mm	140 x 169 x 123 mm
ESC/POS	Star Line & ESC/POS	Star Line & ESC/POS	Star Line & Star Page & ESC/POS	StarPRNT	StarPRNT
58 mm / 80 mm	58 mm / 80 mm	58 mm / 80 mm / 83 mm	112 mm / 80 mm	25 mm - 80 mm	40 mm / 58 mm / 80 mm
102 mm	83 mm	100 mm	100 mm	102 mm	83 mm
0.065 - 0.085 mm	0.053 - 0.085 mm	0.065 - 0.15 mm	0.065 - 0.15 mm	0.053 - 0.154 mm	0.065 - 0.098 mm
51 mm / 72 mm	51 mm / 72 mm	51 mm / 52 mm / 72 mm / 80 mm	104 mm / 72 mm	15 - 72 mm	35 mm / 51 mm / 72 mm
BSC10UC USB Type-B, Parallel Port(36 pin), DK Port(RJ-11) BSC10UD USB Type-B, Serial Port(25 pin), DK Port(RJ-11) BSC10E Ethernet(RJ-45), USB Type-A(Power Port), DK Port(RJ-11)	TSP650IIC Parallel Interface(36 pin), DK Port(RJ-11) TSP650IID Serial Interface(25 pin), DK Port(RJ-11) TSP650IIU USB Type-B Interface, DK Port(RJ-11) TSP650IIE Ethernet Interface(RJ-45), DK Port(RJ-11) TSP650IIHIX Intelligent Interface (USB-B, USB-A, Ethernet(RJ-45)), CloudPRNT, DK Port(RJ-11)	TSP700IIC Parallel Interface(36 pin), DK Port(RJ-11) TSP700IID Serial Interface(25 pin), DK Port(RJ-11) TSP700IIU USB Type-B Interface, DK Port(RJ-11) TSP700IIE Ethernet Interface(RJ-45), DK Port(RJ-11) TSP700IIHIX Intelligent Interface (USB, Ethernet(RJ-45), CloudPRNT, ), DK Port(RJ-11) TSP700IIHIA AirPrint Interface (Ethernet(RJ-45), USB Type-A (WiFi by WiFi Dongle)), DK Port(RJ-11)	TSP800IIC Parallel Interface(36 pin), DK Port(RJ-11) TSP800IID Serial Interface(25 pin), DK Port(RJ-11) TSP800IIU USB Type-B Interface, DK Port(RJ-11) TSP800IIE Ethernet Interface(RJ-45), DK Port(RJ-11) TSP800IIHIX Intelligent Interface (USB, Ethernet(RJ-45), CloudPRNT, ), DK Port(RJ-11) TSP800IIHIA AirPrint Interface (Ethernet(RJ-45), USB Type-A (WiFi by WiFi Dongle)), DK Port(RJ-11)	MCL32CI USB Type-C, USB Type-A, Ethernet MCL32CBI USB Type-C, USB Type-A, Ethernet Bluetooth	USB Type-C, USB Type-A, Ethernet, DK-Port(RJ-11)
Guillotine (Partial Cut)	Guillotine (Partial Cut)	Guillotine (Partial Cut) Full Cut	Guillotine (Partial Cut) Full Cut	Guillotine (Partial Cut) Full Cut	Guillotine (Partial Cut)
1D : UPC-A/E, JAN/EAN-8/13, ITF, CODE39, CODE93, CODE128, CODEBAR(NW-7) 2D : PDF417, QR Code	1D : UPC-A, UPC-E, JAN/EAN8, JAN/EAN13, ITF, CODE39, CODE93, CODE128, CODABAR (NW-7), GSI-128, GSI Omnidirectional, GSI Truncated, GSI Limited, GSI Expanded 2D : PDF417, GSI Stacked, GSI Stacked Omnidirectional, GSI Expanded Stacked, QR Code, GSI Composite Symbols	1D : UPC-A/E, JAN/EAN8, JAN/EAN13, ITF, CODE39, CODE93, CODE128, CODEBAR(NW-7) 2D : PDF417, QR Code	1D : UPC-A/E, JAN/EAN8, JAN/EAN13, ITF, CODE39, CODE93, CODE128, CODEBAR(NW-7) 2D : PDF417, QR Code	1D : UPC-A, UPC-E, JAN/EAN8, JAN/EAN13, ITF, CODE39, CODE93, CODE128, CODABAR (NW-7), GSI-128, GSI Omnidirectional, GSI Truncated, GSI Limited, GSI Expanded 2D : PDF417, GSI Stacked, GSI Stacked Omnidirectional, GSI Expanded Stacked, QR Code, GSI Composite Symbols	1D : UPC-A, UPC-E, JAN/EAN8, JAN/EAN13, ITF, CODE39, CODE93, CODE128, CODABAR (NW-7), GSI-128, GSI Omnidirectional, GSI Truncated, GSI Limited, GSI Expanded 2D : PDF417, GSI Stacked, GSI Stacked Omnidirectional, GSI Expanded Stacked, QR Code, GSI Composite Symbols
Mechanism Life : 20 million lines MCBF : 60 million lines Head Life : 100 km Cutter Life : 1 million cuts	Mechanism Life : 20 million lines MCBF : 60 million lines Head Life : 100 km Cutter Life : 2 million cuts	Mechanism Life : 20 million lines MCBF : 60 million lines Head Life : 100 km Cutter Life : 2 million cuts	Mechanism Life : 20 million lines MCBF : 37 million lines Head Life : 100 km Cutter Life : 2 million cuts	Mechanism Life : 20 million lines MCBF : 36 million lines Using with strong adhesive Label Head Life : 30 km Cutter Life : 200,000 cuts Using with weak adhesive Label Head Life : 75 km Cutter Life : 1 million cuts	Mechanism Life : 11.25 million lines MCBF : 23.5 million lines Head Life : 75 km Cutter Life : 800,000 cuts
Out of Paper Sensor(PE Sensor) Cover Open Sensor	Out of Paper Sensor (PE Sensor) Cover Open Sensor	Out of Paper Sensor(PE Sensor) Paper Near End Sensor Cover Open Sensor	Out of Paper Sensor(PE Sensor) Paper Near End Sensor Cover Open Sensor	Taken Sensor Paper Jam Paper End Cover Open	Taken Sensor Out of Paper Sensor (PE Sensor) Cover Open Sensor

	SP700	SP290	SK1	SK4	SM-L200
					
PRINTING TYPE	Dot Matrix Printing		Direct Thermal Printing (KIOSK)		
Special Features	<ul style="list-style-type: none"> <li>• Unique wipe clean</li> <li>• Splash- Proof design</li> <li>• Two color printing capability</li> <li>• Spill-Proof &amp; Heat-Resistant</li> <li>• Supported ESC/POS</li> <li>• <b>SP747 allows printing speed for chinese characters and image printing.</b></li> </ul>	<ul style="list-style-type: none"> <li>• High reliability with helix head drive and 9 million lines CRT</li> <li>• Bi-directional printer for cut sheet, multi-copy forms</li> <li>• Capable of printing graphics and special characters using a highly reliable 9-pin print head</li> </ul>	<ul style="list-style-type: none"> <li>• Small and Ultra-Light Weight, Designed for wide variety of systems and equipment</li> <li>• Max 250mm/sec high-speed printing</li> <li>• Selectable for Partial cut or Full cut</li> <li>• Autoloading function</li> </ul>	<ul style="list-style-type: none"> <li>• Small and compact design</li> <li>• Three ways of paper position support</li> <li>• Printing speed 150 mm/sec</li> <li>• A good balance of performance and cost</li> </ul>	<ul style="list-style-type: none"> <li>• Drop-In &amp; Print easy paper loading</li> <li>• 2", 58mm Bluetooth</li> <li>• 3.0 / 4.0 Mobile Receipt / Label Printer</li> <li>• Standard 1 &amp; 2D barcode supported</li> </ul>
Supported Media	Max. Three-ply paper	Max. Three-ply paper	Thermal paper	Thermal paper	Thermal paper
Star Innovation Support	CloudPRNT				PassPRNT
Printing Speed	4.7 lines/sec	3.1 lines/sec	250 mm/sec	150 mm/sec	35 mm/sec
Dimension (W x D x H)	SP700 : 160 x 245 x 153.5 mm SP700R (with Rewinder) : 160 x 288 x 184.5 mm	180 x 190 x 138 mm	SK1-211 : 104 x 145.5 x 85.4 mm (With 120 diameter paper roll) SK1-311 : 127 x 145.5 x 85.4 mm (With 120 diameter paper roll)	SK4-21 : 86 x 150 x 81.7 mm SK4-31 : 106 x 150 x 81.7 mm	86 x 123 x 46 mm
Command Type Supported	Star Line & ESC/POS	Star Line & ESC/POS	Star Line & ESC/POS	Star Line & ESC/POS	StarPRNT
Paper Width	76 mm / 70 mm / 58 mm	80 - 182 mm	SK1-211 : 58 mm / 60 mm SK1-311 : 58 mm / 60 mm / 80 mm / 83 mm	SK4-21 : 58mm SK4-31 : 80 mm	58 mm
Paper Diameter	85 mm	-/-	120 mm	83 mm	13 - 40 mm
Paper Thickness	0.060 - 0.10 mm	0.06 - 0.25 mm	0.059 ~ 0.15 mm	0.059 ~ 0.085 mm	0.053 - 0.12 mm
Printing Width	63 mm / 57 mm / 45 mm	63 mm	SK1-211 : 54 mm / 56 mm SK1-311 : 54 mm / 56 mm / 72 mm / 80 mm	SK4-21 : 54mm SK4-31 : 72mm	48 mm
Interface Connectivity	SP700M C Parallel Interface (36 pin), DK Port(RJ-11) SP700M D Serial Interface (25 pin), DK Port(RJ-11) SP700M U USB Type-B Interface, DK Port(RJ-11) SP700M E Ethernet Interface(RJ-45), DK Port(RJ-11) SP700M X Intelligent Interface (USB, Ethernet(RJ-45), CloudPRNT), DK Port(RJ-11) SP700M HIA AirPrint Interface (Ethernet(RJ-45), USB Type-A (WiFi by WiFi Dongle)), DK Port(RJ-11)	SP298M C Parallel Interface(36 pin), DK Port(RJ-11) SP298M D Serial Interface(25 pin), DK Port(RJ-11)	Serial (RS-232c) Mini-USB	Serial (RS-232c) Mini-USB	Micro-USB Bluetooth 3.0 SPP (Serial Port Profile) Bluetooth 4.0 BLE (Bluetooth Low Energy)
Cutter Type	SP712/SP717 : Tear Bar SP742/SP747 : Guillotine (Partial Cut), Full Cut	Slip Printer	Guillotine (Partial Cut) Full Cut	Guillotine (Partial Cut) Full Cut	Tear Bar
Barcode Supported	Not Supported	Not Supported	1D :UPC-A/E, JAN13/8, CODE39, ITF, CODABAR, CODE128, GS1 Databar Omni-directional, Truncated, Limited, Stacked, Stacked Omni-directional 2D : QR Code, MaxiCode, PDF417, Data Matrix	1D :UPC-A/E, JAN13/8, CODE39, ITF, CODABAR, CODE128, GS1 Databar Omni-directional, Truncated, Limited, Stacked, Stacked Omni-directional 2D : QR Code, MaxiCode, PDF417, Data Matrix, MicroQRCode	1D : UPC-A, UPC-E, EAN8, EAN13, ITF, CODE39, CODE93, CODE128 2D : PDF417, QR Code
Reliability	Mechanism Life : 10 million lines MCBF : 22 million lines Head Life : 150 million characters Cutter Life : 1 million cut	MCBF : 2.5 million lines Head Life : 70 million characters	MCBF : 100 million lines Head Life : 100 km Cutter Life : 1 million cut	MCBF : 100 million lines Head Life : 100 km Cutter Life : 1 million cut	Head Life : 50 km Battery Life : Approximately 13 hrs (12 receipts per hour with sleep mode) Full Battery Charge : Approximately 5 hrs
Sensor	Out of Paper Sensor(PE Sensor) Black Mark Sensor	TOF / BOF Sensor Out of Paper Sensor(PE Sensor)	Near end Sensor Paper empty Sensor Black mark Sensor Gap Sensor	Near end Sensor Paper empty Sensor Black mark Sensor Gap Sensor	Cover Open Sensor Out of Paper Sensor(PE Sensor) Black Mark Sensor

SM-S230i	SM-T300i	SM-T400i
		
<b>Direct Thermal Printing (Mobile)</b>		
<ul style="list-style-type: none"> <li>• 2 Inch Portable Printer</li> <li>• Compact &amp; Lightweight Design</li> <li>• Supported Barcode/ Graphics Printing</li> <li>• High Speed Printing 80mm/sec</li> </ul>	<ul style="list-style-type: none"> <li>• 3 Inch Ultra Rugged Mobile Printer</li> <li>• Magnetic Stripe Reader (SM-T301i)</li> <li>• Small &amp; Light Weight Design</li> </ul>	<ul style="list-style-type: none"> <li>• 4 Inch Ultra Rugged Mobile Printer</li> <li>• Magnetic Stripe Reader (SM-T404i)</li> <li>• Small &amp; Light Weight Design</li> <li>• Long Battery Life</li> </ul>
Thermal paper	Thermal / Label paper	Thermal / Label paper
PassPRNT	PassPRNT	PassPRNT
80 mm/sec	80 mm/sec	110 mm/sec
Standard Model : 80 x 114 x 44 mm Card Reader Model : 80 x 118 x 44 mm	SM-T300i: 120 x 130.5 x 58.4 mm SM-T304i : 120 x 132.2 x 58.4 mm	Without MSR Model : 150.9 x 136 x 63.3 mm With MSR Model : 150.9 x 142 x 63.3 mm
StarPRNT & ESC/POS	StarPRNT & ESC/POS	StarPRNT & ESC/POS
58 mm	80 mm	112 mm
40 mm	50 mm	50 mm
0.058 - 0.070 mm	0.061 - 0.075 mm	0.063 - 0.065 mm
48 mm	72 mm	104 mm
Mini-USB	Serial (RS-232C) (9pin) to Mini-USB	Serial (RS-232C)
Bluetooth 3.0 SPP (Serial Port Profile)	Bluetooth 3.0 SPP (Serial Port Profile)	Bluetooth 2.1
Tear Bar	Tear Bar	Tear Bar
1D : UPC-A, UPC-E, EAN8, EAN13, ITF, CODE39, CODE93, CODE128, CODABAR(NW-7)	1D : JAN, EAN, UPC, ITF, Code39, Code93, Code128, CODABAR(NW-7), GS1 Barcode (StarPRNT only)	1D : JAN, EAN, UPC, ITF, Code39, Code93, Code128, CODABAR(NW-7), GS1 Barcode(StarPRNT only)
2D : PDF417, QR Code, DATA Matrix	2D : PDF417, QR Code, DATA Matrix (ESC/POS only), GS1 2Dcode (StarPRNT only), GS1 Composite (StarPRNT only)	2D : PDF417, QR Code, DATA Matrix(ESC/POS only), GS1 2Dcode(StarPRNT only), GS1 composite(StarPRNT only)
Head Life : 50 km	Head Life : 50 km	Head Life : 50 km
Battery Life : Approximately 15 - 18 hrs (12 receipts per hour)	Battery Life : Approximately 26 - 31 hrs (12 receipts per hour)	Battery Life : Approximately 34 - 39 hrs (12 receipts per hour)
Full Battery Charge : Approximately 4 hrs	Full Battery Charge : Approximately 4 hrs	Full Battery Charge : Approximately 4 hrs
Out of Paper Sensor(PE Sensor) Black Mark Sensor	Cover Open Sensor Out of Paper Sensor(PE Sensor) Black Mark Sensor	Cover Open Sensor Out of Paper Sensor(PE Sensor) Black Mark Sensor





# star

## Contact

399 Interchange 21 Building Unit 2105, 21st Floor  
Sukhumvit Rd, Klongtoey-Nua, Watthana, Bangkok 10110  
Email : sales@star-m.co.th Tel : +662-258-4631

